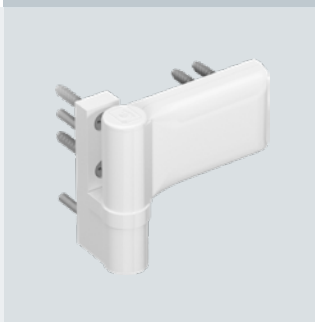
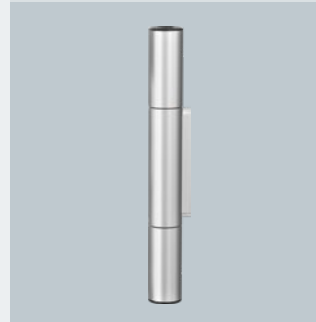
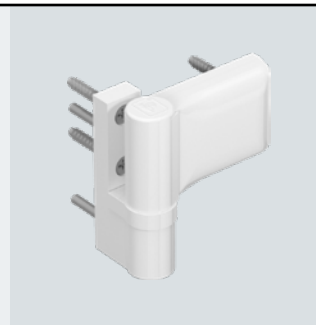




# Hahn Produktkatalog

**F** Catalogue produits

**GB** Product catalogue





## HAHN ROLLENBAND AT



### DESCRIPTION

#### FOR USE ON HIGH-QUALITY ALUMINIUM DOORS

The new Rollenband AT is a hinge system that can be adapted to all common door frame systems. Its roller diameter of 20 mm meets the high design standards, which building owners and architects have for ensuring that hinges on their residential and commercial doors are as unobtrusive as possible. It can be adjusted in six directions. The adjustment takes place inside of the hinges. The well-designed hinge contour is retained even in case of extreme adjustment. The largely pre-assembled hinge is quick and easy to install.

A one-piece bearing pin made of stainless steel ensures a high level of stability. This is designed in such a way that the door can be easily removed even in case of a low lintel. The bearing point made of a special high-quality material is almost abrasion-free even with doors that are very heavy and subject to frequent use and thus requires no maintenance by facility management.

**NEW: Hinge system for profile combinations with an upstand.**

- Areas of application:
  - Doors made of aluminium sections, especially in commercial buildings
  - Main entrance doors
  - Functional doors
  - Side entrance doors
  - Exterior doors
  - Interior doors
- Suited for use with almost every major aluminium system
- Same appearance retained after adjustment
- Hinge system for profile combinations with an upstand for inward opening doors



### SYSTEM / APPLICATION

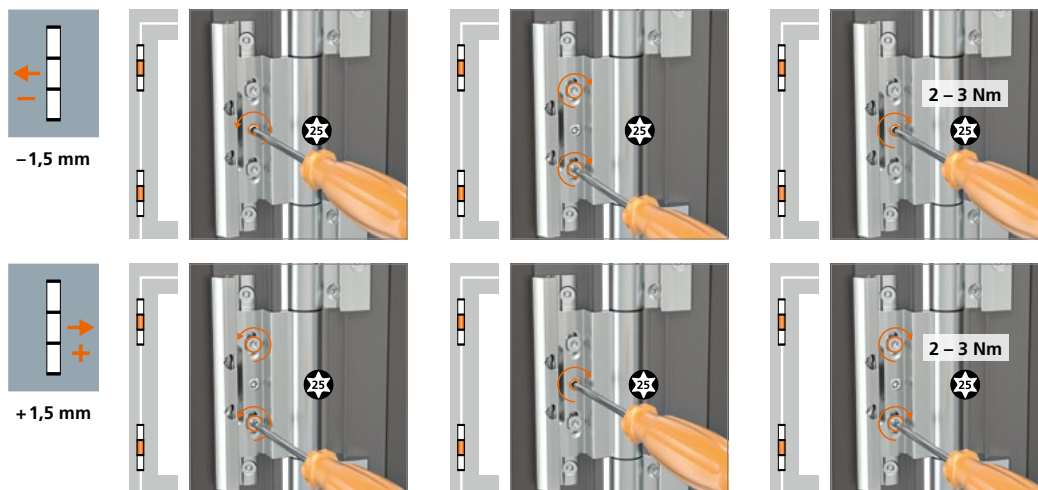
- Material: Made of extruded aluminium
- Fastening method: Direct installation with screws
- Load capacity: Depending on profile design
  - flush-mounted: max. 180 kg (3 hinges)
  - with upstand: max. 120 kg (2 hinges)
- Adjustability: Adjustable in 6 directions:
  - Horizontal adjustment  $\pm 1.5$  mm
  - Vertical adjustment  $\pm 3$  mm
  - Sealing pressure  $\pm 0.3$  mm
- Usable DIN left / DIN right
- Certifications: · flush-mounted: CE-certified according to EN 1935:2002, hinge class 14
  - with upstand: CE-certified according to EN 1935:2002, hinge class 13, currently being prepared
- Colours: Hinges available in anodised colours, RAL colours and Hahn Trinox

The Hahn Rollenband AT is a system-adapted hinge which was developed in close co-operation with door manufacturers. Different doorframe combinations require special solutions. To help us process your enquiry and order, we require accurate information about the respective doorframe combination to be used.



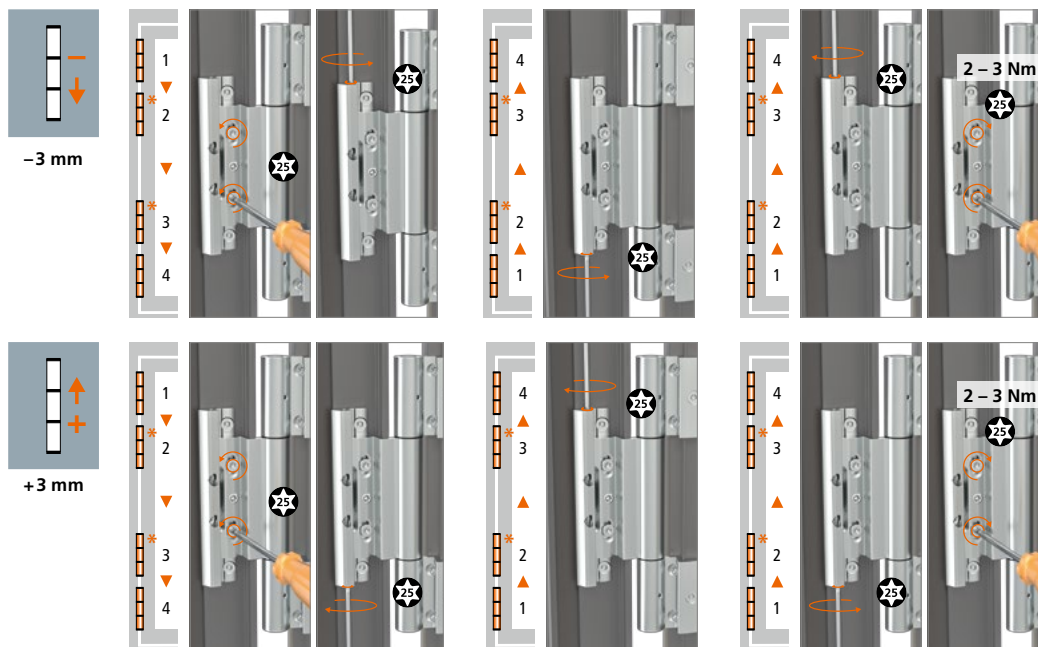
## Notice de réglage Adjustment instructions

### Horizontalverstellung · Réglage horizontal · Horizontal adjustment



Verstellung kann je nach Einbausituation geringer ausfallen. Le réglage peut, selon la situation de montage, être plus faible.  
A minor adjustment is possible depending on the mounting situation.

### Höhenverstellung · Réglage en hauteur · Adjusting the height



\* situationsbedingt · conditionné par la situation · depending on given situation



**Bei allen Verstellungen ist der Türflügel im Schwerpunkt zu entlasten!  
Die Parallelität zwischen Befestigungsplatte und mittlerem Bandlappen muss gewährleistet sein!**

Avant tout réglage soulagez le vantail. Aucun réglage ne doit être effectué en charge!  
Le parallélisme entre la plaque de fixation et la lame centrale de la charnière doit être assurée.

Whenever readjusting the door leaf, the load must be taken off the centre of gravity!  
The parallelism between the mounting plate and the middle hinge strap must be ensured!



Hahn Serie 60 AT



Hahn KT-EV



Hahn VL-Band ST



Hahn Rollenband G



Hahn KT-RV



*Für jede  
Situation  
die passende  
Lösung*



Hahn KT-V 6R



Hahn VL-Band 180



Hahn Rollenband NG



Hahn KT-RN



Hahn Türband 4 AT



Hahn KT-Rollenband NL



Hahn KT-SV



Hahn KT-B 6R



Hahn Türband 4 AT



Hahn KT-N 6R



Hahn Türband 4 HM0



Hahn KT-RKN



Hahn KT-RV



Hahn KT-EN



Hahn Rollenband AT



Hahn Serie 60 AT



Hahn VL-Band AT



Hahn Klemmband



Hahn KT-RKV



Hahn Klemmband



Hahn AT-G



Hahn KT-RN

 **Dr. Hahn**<sup>®</sup>  
TÜRBÄNDER. MADE IN GERMANY.



**Dr. Hahn GmbH & Co. KG**

Trompeterallee 162-170 · D-41189 Mönchengladbach  
Postfach 400109 · D-41181 Mönchengladbach  
Phone +49(0)2166 954-3 · E-Mail: sales@dr-hahn.com  
[www.dr-hahn.eu](http://www.dr-hahn.eu)