



Hahn KT-SV / KT-SN













Adjustable in 6 directions



Universal hinge for front and side entry doors





								
	Service classes	Durability	Weight of test door	Fire resistance	Security	Corrosion resistance	Intrusion protection	Hinge class
	4	7	5	0	1	0/4 (5)*	1	12
	4	7	5	0	1	0/4 (5)*	1	12

Suited for installation on doors placed along emergency escape routes.

*Corrosion class 5 according to DIN EN 1670:2007 for surface traffic white RAL 9016, liquid coating Hahn Titan N Grade 0 for non-coated products according to DIN EN 1670:2007

CE For explanations of the table, please visit www.dr-hahn.com





Hahn KT-SV / KT-SN

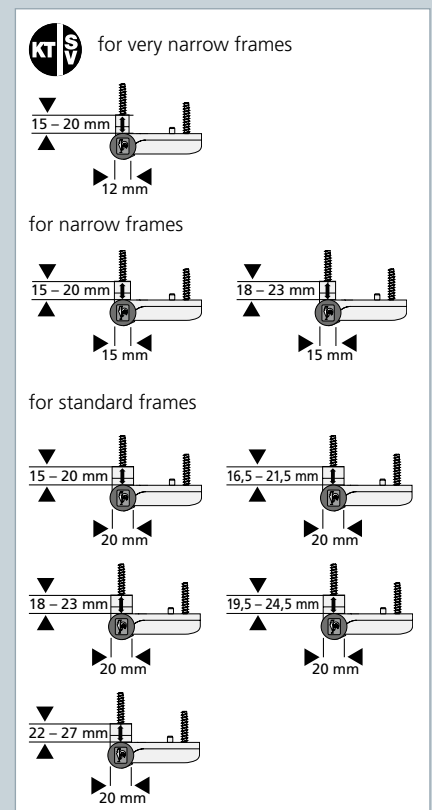
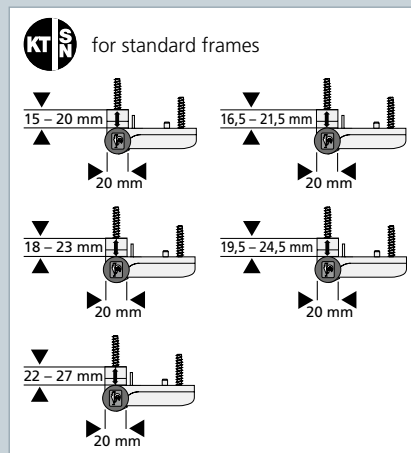
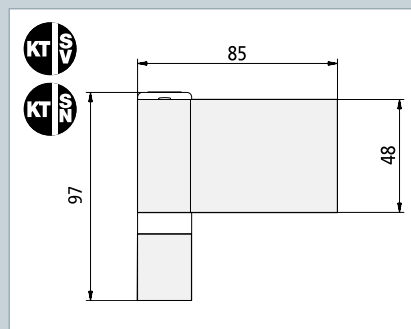
Universal hinge
for front and
side entry doors

- 1 KT-SN with upstand fastening for additional stability
- 2 Convenient, variable sealing pressure adjustment ± 2.5 mm without having to lift or remove the door
- 3 Continuously variable horizontal adjustment ± 5 mm – for plumbvertical alignment of door leaf
- 4 High stability through retroactively insertable pins
- 5 Rust-proof, wear-resistant bearing bolt
- 6 Lifting spindle secured for transport
- 7 High-quality finishes – available in all RAL colours
- 8 Simple, variable height adjustment $+3/-2$ mm – on installed doors
- 9 Greater security thanks to integrated anti-intruder system without additional parts

Also available with self-tapping screws

Other advantages:

- For all common upstand ranges from 15 to 27 mm
- All adjustments can be made by a single person when the door is closed
- CE-certified: hinge class 12
- Same appearance retained after adjustment
- Can be used on left or right-hand doors
- Bearing point maintenance-free
- Door hinges are largely pre-assembled



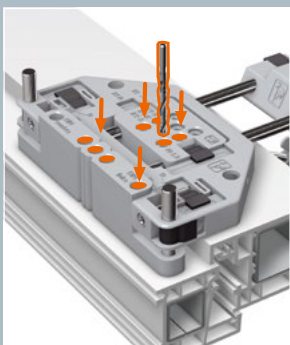
Adjustable in 6 directions

Preferred for front and side entry doors

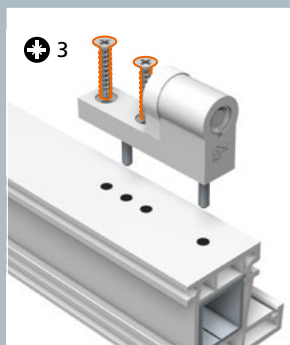
Light-weight doors with slender projected widths are always a particular challenge for door manufacturers. Hahn hinges of the KT-SV and KT-SN series make sure that doors weighing up to 80 kg are not left in the lurch. The Hahn KT-SV is available in three hinge base widths: 12, 15 and 20 mm. Handling in the workshop is simple and adjustments can be made quickly at the installation site.

Both hinge series can also be ordered as an alternative with self-tapping screws. Thus, the processing time is reduced significantly. And even though the hinge is frequently used for side entry doors, it still comes with a CE certificate, even with hinge class 12 for very high loads. The high-quality materials that are used, among other things, make sure of that.

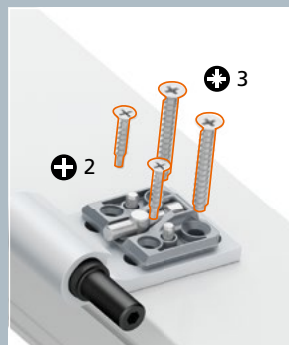
Installation instructions



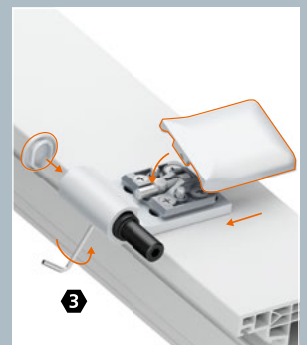
Drill frame. Note left or right-hand doors.



Screw on hinge part for frame.



Screw on hinge part for door.



Insert hinge cover.
Snap cap in place.





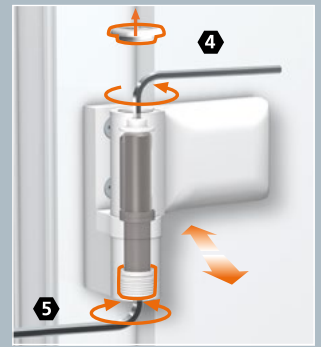
Impressive in design and functionality

Doors with narrow leaves on frames with a visible narrow width require a hinge that is both stable and delicate at the same time. The Hahn KT-SV/KT-SN meets these requirements in a special way. It is constructed of extruded aluminium, a material that is particularly good at withstanding the pressure and tensile forces that doors experience.

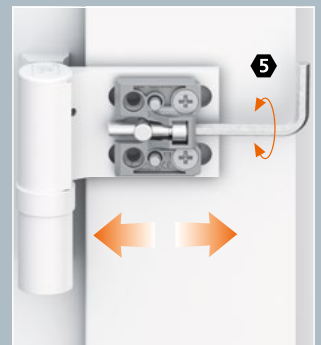
Thanks to its round form, the hinge body has a subtle appearance when installed. The collar of the bearing bushing covers the adjustment gap such that the appearance does not change even in case of extreme misalignment.

From more than 200 colours, building owners can select the design that is right for their project. In addition to that, the hinge never has to be lubricated. The bearing point is absolutely maintenance-free.

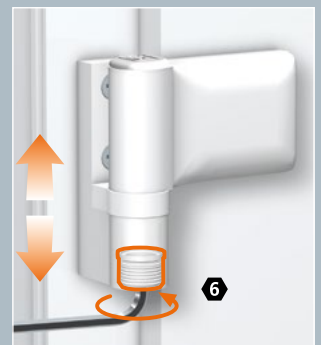
Adjustment instructions



Adjust sealing pressure
 $\pm 2,5$ mm



Variable horizontal
adjustment ± 5 mm



Variable height adjustment
 $+3/-2$ mm



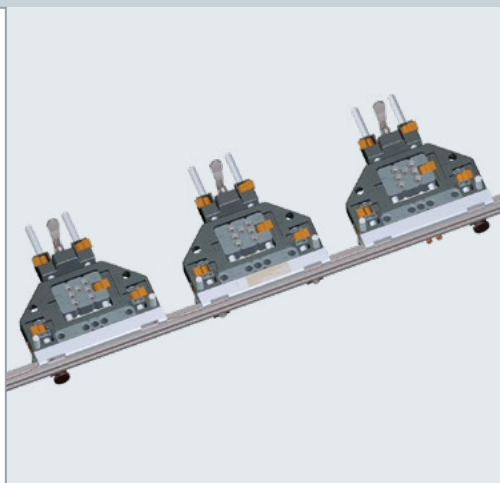
Individual parts






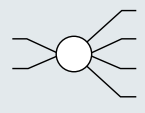



- 1 Frame hinge part
- 2 Door hinge part KT-SN, adjustment unit pre-assembled with angle stop, indicate RAL colour
- 3 Door hinge part KT-SV, adjustment unit pre-assembled, indicate RAL colour
- 4 Bearing bolt
- 5 Saw-resistant bearing bolt
- 6 Bearing bushing with lifting spindle
- 7 Special screw
- 8 Cap
- 9 Cover strip, indicate RAL colour
- 10 Countersunk head tapping screw 6 x 40
- 11 Self-tapping screw
- 12 Locking screw for cover strip (small)

Accessories

Drilling jig with clamp	No. T315A0001
Drilling jig without clamp	No. T315A0000
Automatic rod drilling jig	No. T415A0001
Drill	No. K450A0001
Step screw with flat-headed screw M6x18	No. K450A0006
Tool for screwing in step screws	No. K450A0004
Saw-resistant bearing pin	No. K250A0042
Countersunk screw 6,3x80 for frame and sash	No. K500E0007



Item numbers

 KT-SV for standard frames (20 mm hinge base) Maximum sash weight 80 kg						
Upstand range	 	PU 1 hinge per box	PU 24 hinges per box		E	G
15–20 mm		P307 ■ 0001 P307 ■ 0045	P307 ■ V001 P307 ■ V045		RAL 9010	RAL 9016
					5 RAL 8077	9 Special colour*
16.5–21.5 mm		P307 ■ 0056 P307 ■ 0057	P307 ■ V056 P307 ■ V057		RAL 9010	RAL 9016
					5 RAL 8077	9 Special colour*
18–23 mm		P307 ■ 0010 P307 ■ 0046	P307 ■ V010 P307 ■ V046		RAL 9010	RAL 9016
					5 RAL 8077	9 Special colour*
19.5–24.5 mm		P307 ■ 0021	P307 ■ V021		RAL 9010	RAL 9016
					5 RAL 8077	9 Special colour*
22–27 mm		P307 ■ 0080 P307 ■ 0081	P307 ■ V080 P307 ■ V081		RAL 9010	RAL 9016
					5 RAL 8077	9 Special colour*
 KT-SV for narrow frames (15 mm hinge base) Maximum sash weight 80 kg						
15–20 mm		P307 ■ 0013 P307 ■ 0047	P307 ■ V013 P307 ■ V047		RAL 9010	RAL 9016
					5 RAL 8077	9 Special colour*
18–23 mm		P307 ■ 0030 P307 ■ 0048	P307 ■ V030 P307 ■ V048		RAL 9010	RAL 9016
					5 RAL 8077	9 Special colour*
 KT-SV for very narrow frames (12 mm hinge base) Maximum sash weight 60 kg						
15–20 mm		P307 ■ 0002 P307 ■ 0050	P307 ■ V002 P307 ■ V050		RAL 9010	RAL 9016
					5 RAL 8077	9 Special colour*
 KT-SN for standard frames (20 mm hinge base) Maximum sash weight 80 kg						
15–20 mm		P306 ■ 0001 P306 ■ 0045	P306 ■ V001 P306 ■ V045		RAL 9010	RAL 9016
					5 RAL 8077	9 Special colour*
16.5–21.5 mm		P306 ■ 0056 P306 ■ 0057	P306 ■ V056 P306 ■ V057		RAL 9010	RAL 9016
					5 RAL 8077	9 Special colour*
18–23 mm		P306 ■ 0010 P306 ■ 0046	P306 ■ V010 P306 ■ V046		RAL 9010	RAL 9016
					5 RAL 8077	9 Special colour*
19.5–24.5 mm		P306 ■ 0021	P306 ■ V021		RAL 9010	RAL 9016
					5 RAL 8077	9 Special colour*
22–27 mm		P306 ■ 0080 P306 ■ 0081	P306 ■ V080 P306 ■ V081		RAL 9010	RAL 9016
					5 RAL 8077	9 Special colour*



Direct installation with screws



Self-tapping screws

*Please indicate special colour

 **Dr. Hahn**[®]
HINGES. MADE IN GERMANY.



Dr. Hahn GmbH & Co. KG

Trompeterallee 162 – 170 · D-41189 Mönchengladbach
Postfach 400109 · D-41181 Mönchengladbach
Phone +49(0)2166/954-3 · E-mail: sales@dr-hahn.com
www.dr-hahn.com