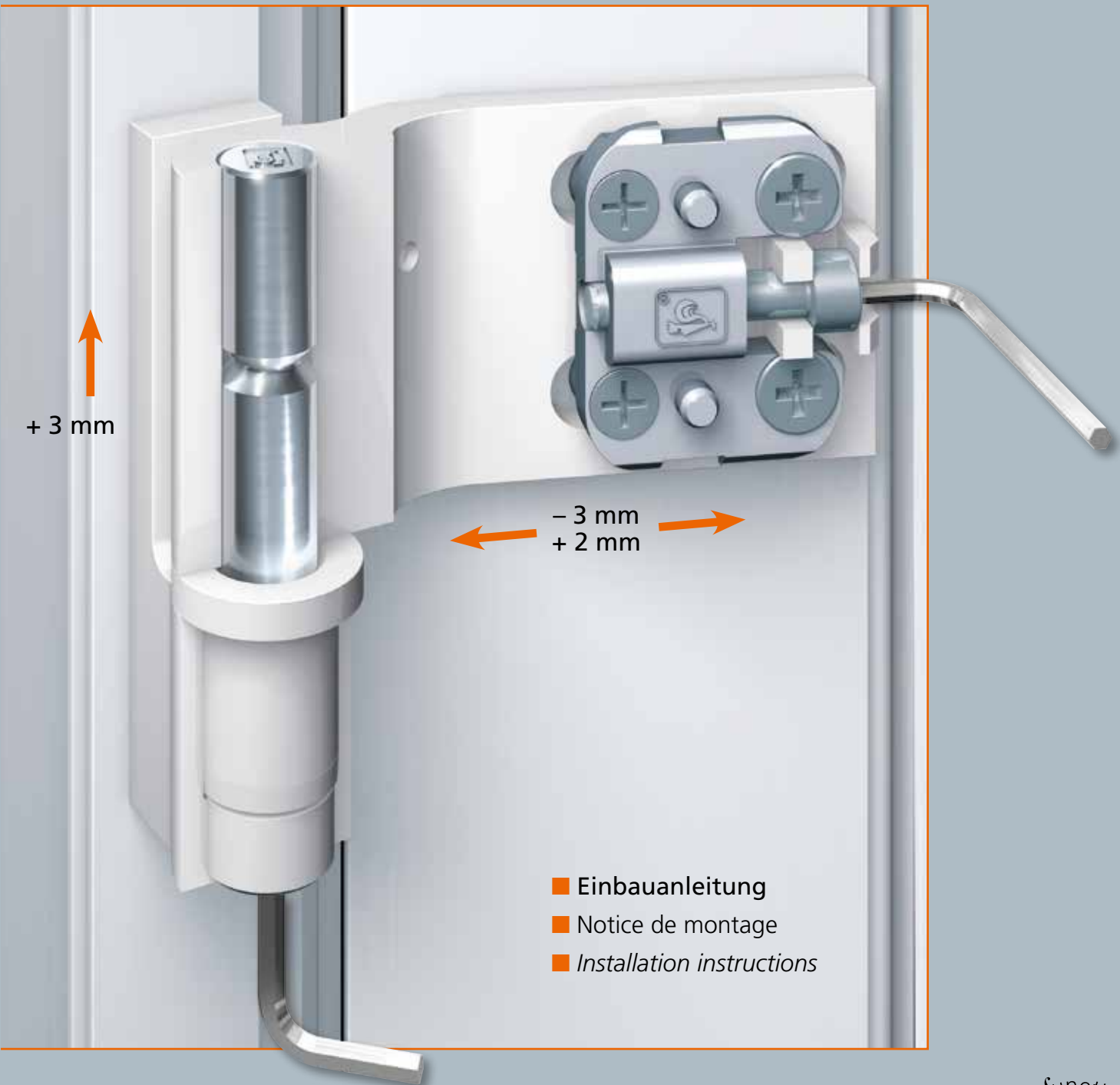




Hahn AT-G

Universalband für leichte Aluminiumtüren

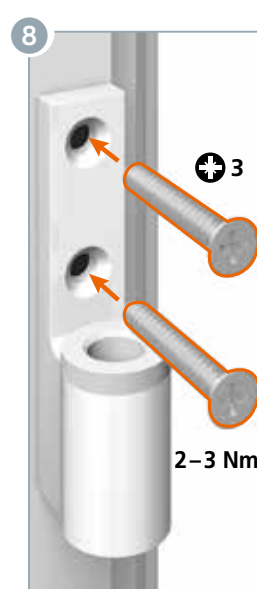
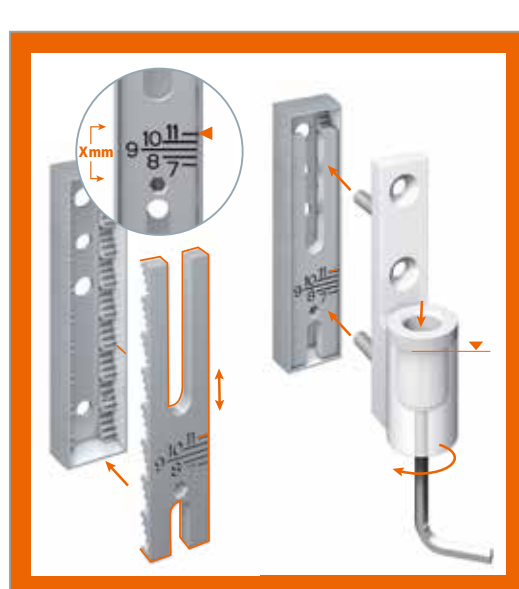
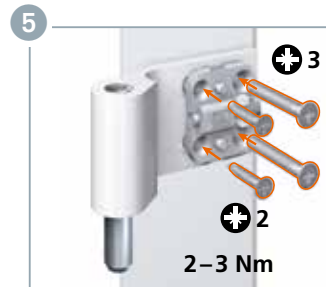
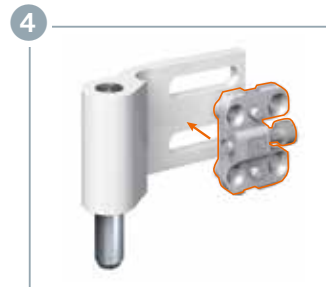
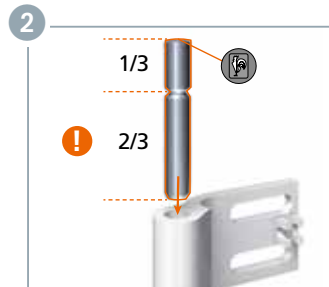
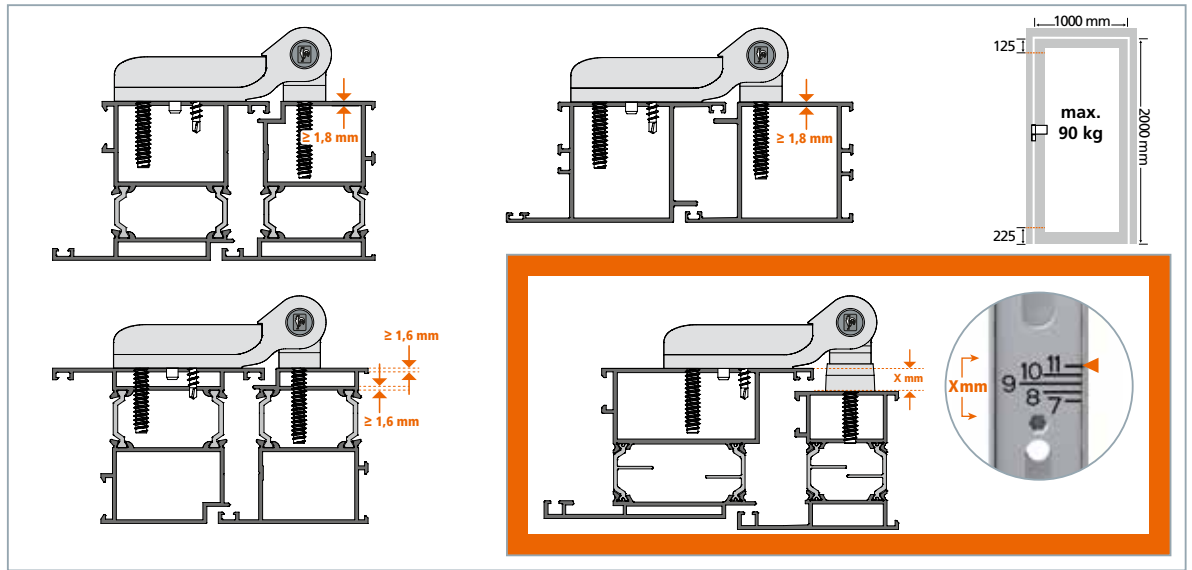
F Paumelle universelle pour portes aluminium légères
GB Universal hinge for lightweight aluminium doors





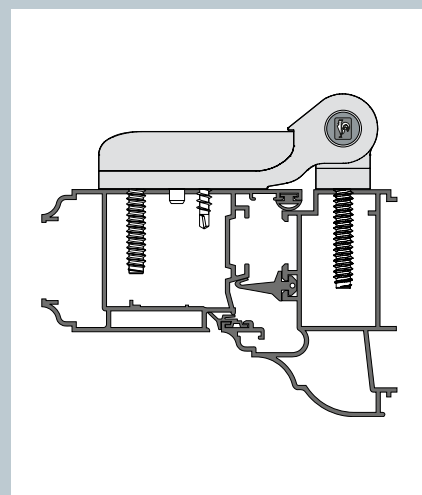
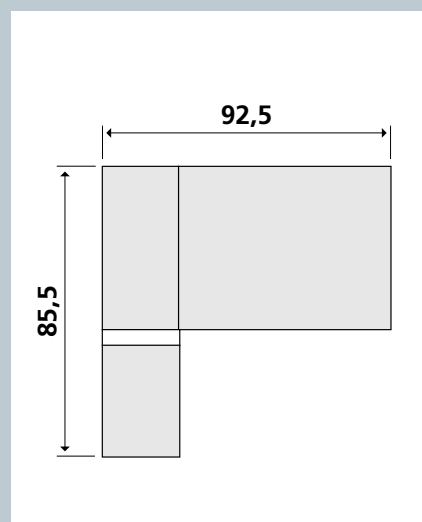
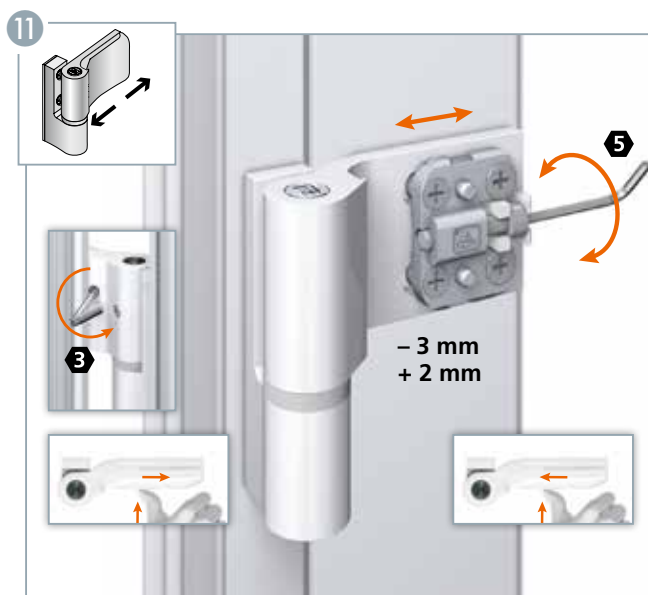
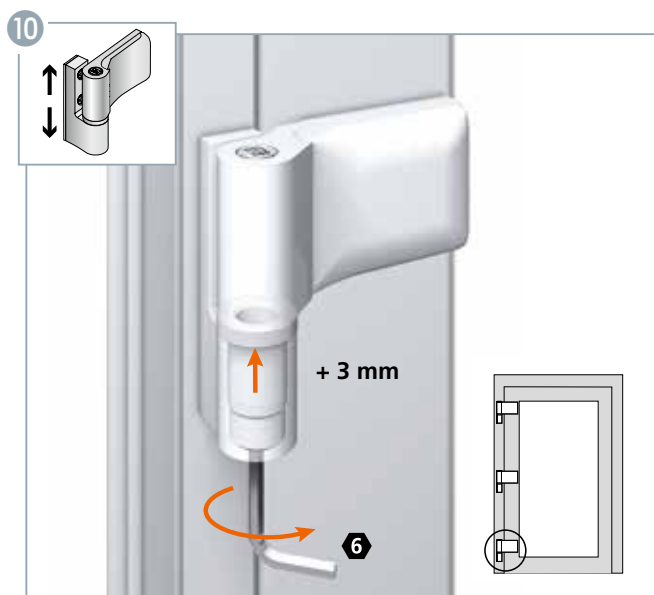
Hahn AT-G

Einbauanleitung · Notice de montage · Installation instructions



Einstellanleitung · Notice de réglage · Adjustment instructions

Verstellung der Bänder nur durch im Türenbau erfahrene Fachhandwerker · Réglage et montage des paumelles uniquement par des professionnels qualifiés · Adjustment and regulation only to be done by an experienced tradesman.



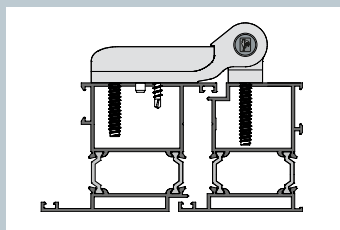
MADE IN GERMANY

Hahn AT-G

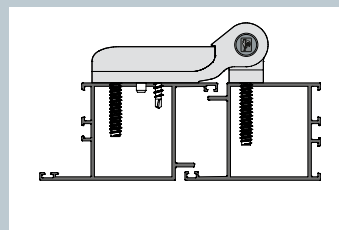
Artikelnummern

No. d'article

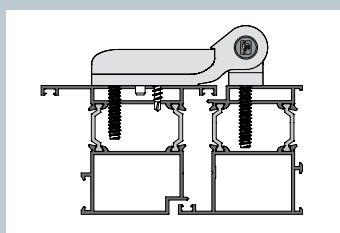
Item number



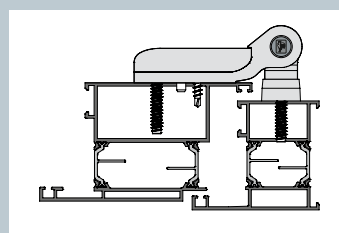
A510 ☐ 0000



A510 ☐ 0000



A510 ☐ 0000



A511 ☐ 0000

Verpackungseinheit: 1 Band im Karton

Unité d'emballage : 1 paumelle par boîte · Packaging unit: 1 hinge per box

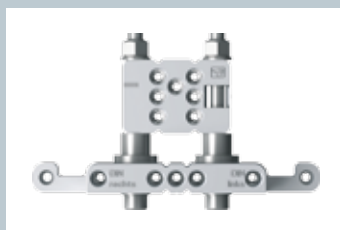
Bestell-Schlüssel/Art.-Nr. · Codes clés/No. d'article · Order key/item number

- ☐ E = RAL 9010 weiße Kunststoffteile/pièces PVC blanches/white PVC parts
- ☐ G = RAL 9016 weiße Kunststoffteile/pièces PVC blanches/white PVC parts
- ☐ 5 = RAL 8077 schwarze Kunststoffteile/pièces PVC noires/black PVC parts
- ☐ 4 = RAL 9010 schwarze Kunststoffteile/pièces PVC noires/black PVC parts
- ☐ 6 = RAL 9016 schwarze Kunststoffteile/pièces PVC noires/black PVC parts
- ☐ 9 = RAL 9005 schwarze Kunststoffteile/pièces PVC noires/black PVC parts
- ☐ 9 = Silbermetallic 003 schwarze Kunststoffteile/pièces PVC noires/black PVC parts

Bohrlehre

Gabarit de perçage

Drilling jig



T510A0000