



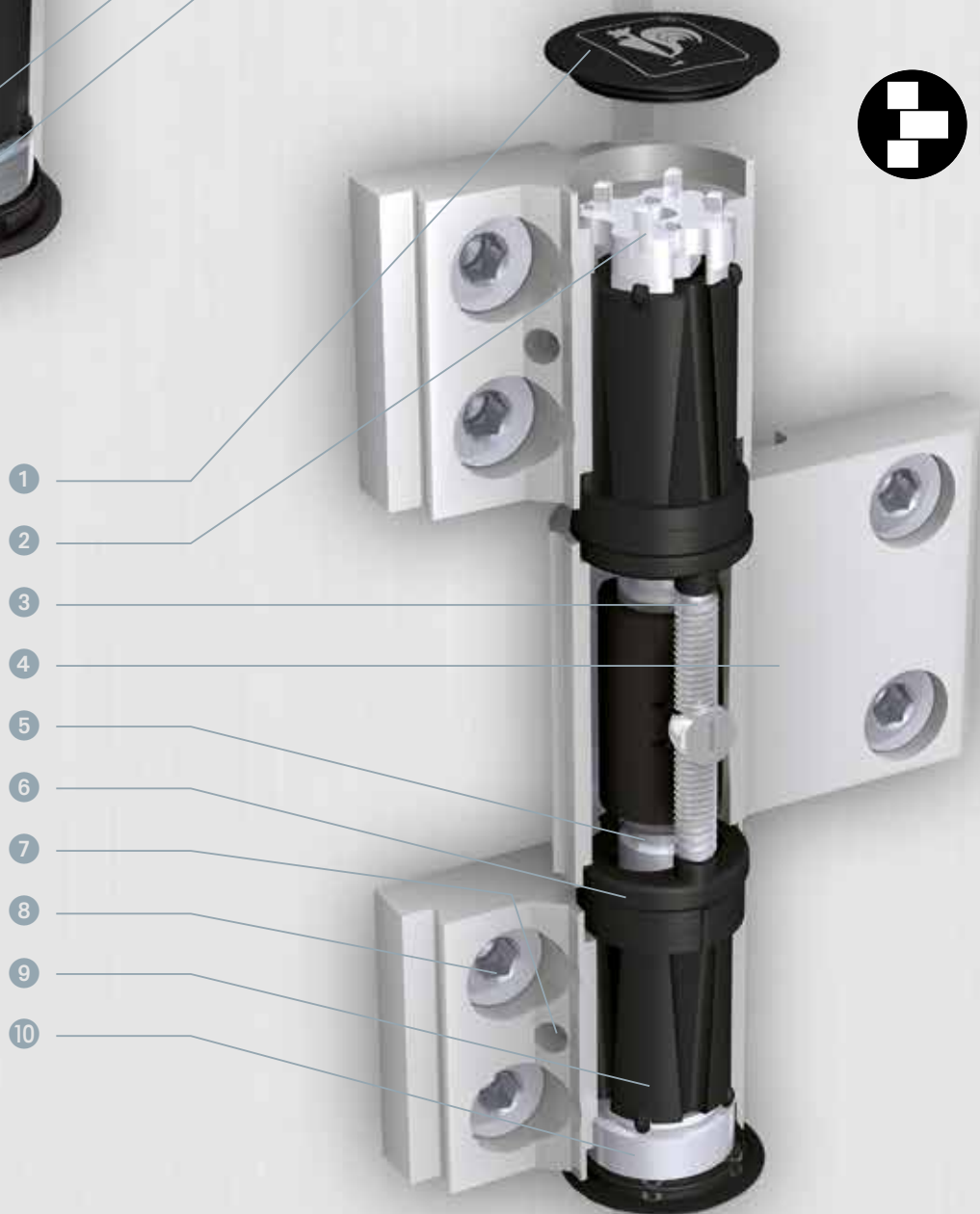
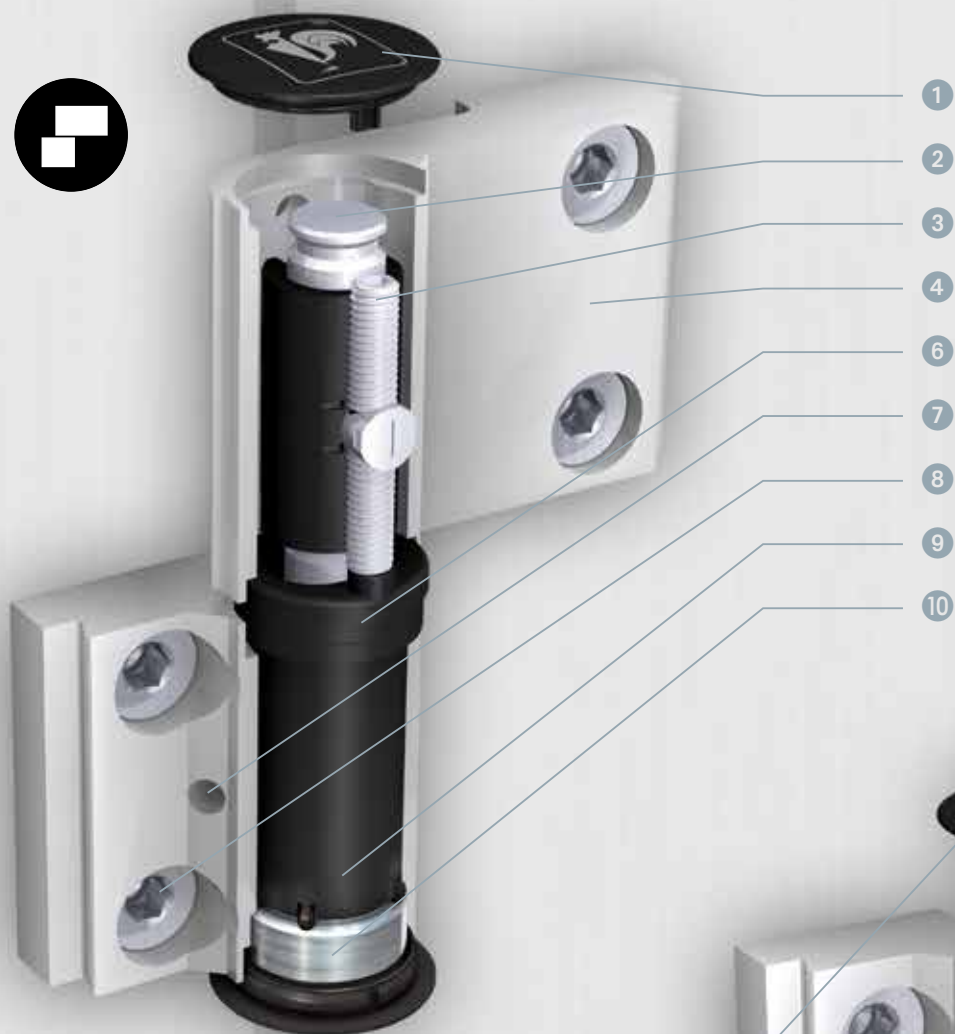
# Hahn Türband 4

For representative commercial and functional doors



**NEW – WITH INNOVATIVE  
MOUNTING OF HINGES**







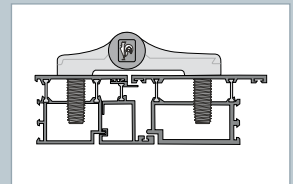
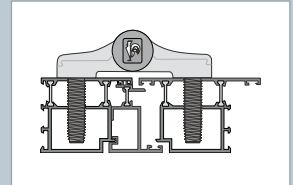
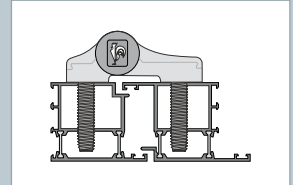
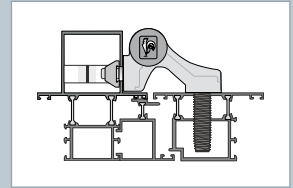
## Hahn Türband 4

Screw-on hinge with a roll look for metal doors

- 1 **Dimensionally stable and colour-fast plastic parts** for long-lasting attractive look
- 2 **⚙️ Solid bearing pins** rustproof for high hinge stability
- 2 **⚙️ Adjustment tool integrated** – thus always available on-site
- 3 **Horizontal adjustment** infinitely variable up to  $\pm 2.5$  mm – designed for one-person use
- 4 **Solid hinge blades** in elegant design – appear light on the door
- 5 **Continuous bearing pin** rust-proof – for great hinge stability
- 6 **Bearing point maintenance-free** – no lubrication necessary
- 7 **Covers that snap in place** – with integrated lock screw
- 8 **Innovative mounting** with Hahn screw anchor – for quicker processing
- 9 **Adjustment of sealing pressure**  $\pm 0.5$  mm with door leaf installed
- 10 **Easy height adjustment** variable  $+3/-2$  mm – without lifting or removing the door

### Other advantages

- Available for all major aluminium sections
- A variety of possible combinations and mounting options for inward and outward opening doors, even for reversible profile and corner post constructions
- Variations for doors with excessive overall width and doors with narrow door frames
- Capable of supporting up to 220 kg (3-piece) or 180 kg (2-piece) – depending of section design and application
- Special designs for folding doors and anti-burglar doors (EN 1627)
- Adjustable in six directions
- Surfaces in anodised and all RAL colours





## The fastest Hahn hinge of all times ...



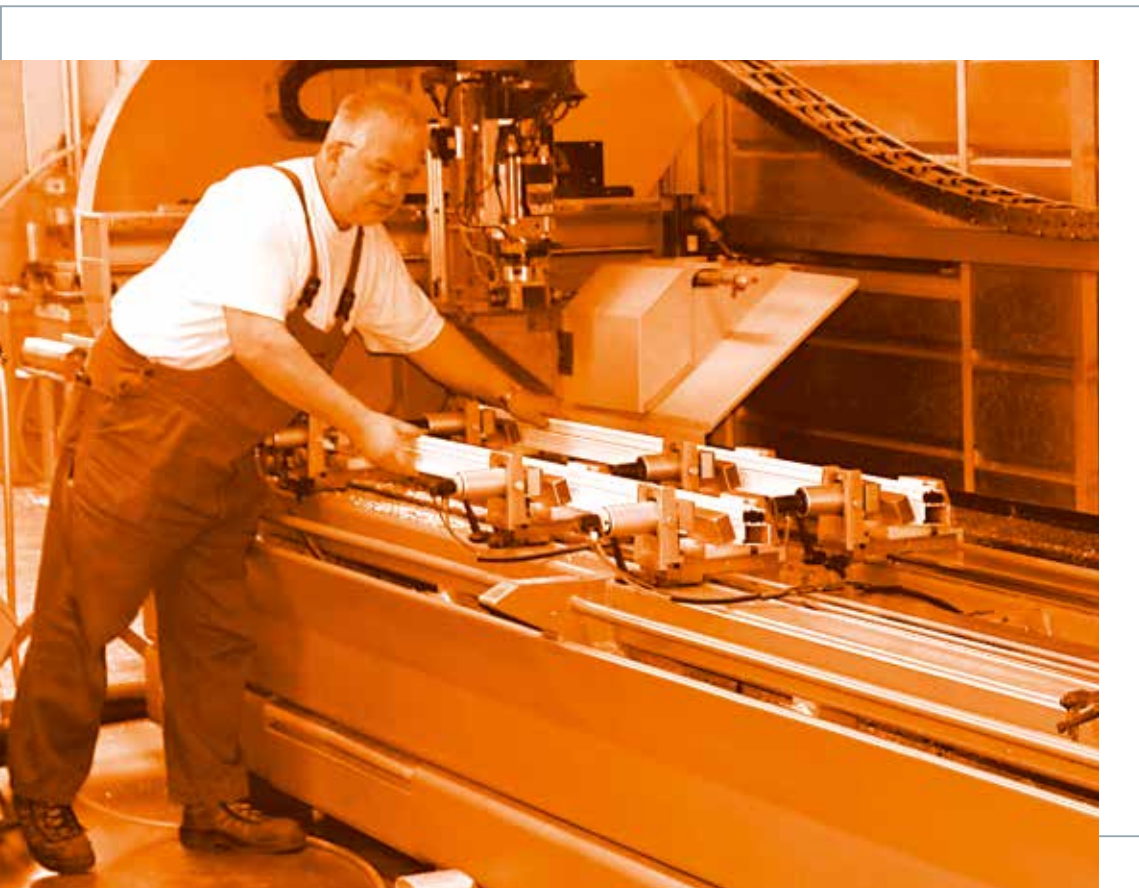
### ... with innovative mounting

The Hahn Türband 4 is directly screwed to the section with the newly developed screw anchor. This process is suited for almost every major insulated system profile sections. It is not necessary to bridge the insulating chambers using spacer bushings. The screw anchor prevents the chambers from becoming deformed.



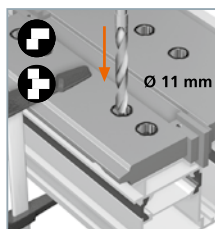
The Türband system offers possible combinations and mounting variations for doors that open inward and outward – even for reversible profile and corner post constructions. It is especially suited for extreme installation widths, doors with narrow frames or even with flexible sections. When it comes to folding doors and anti-burglar doors, door manufacturers are well advised to give the new Hahn Türband 4 a try.



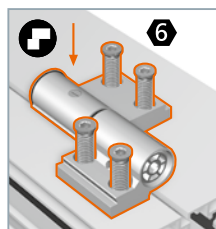


**Quicker mounting  
= more efficient assembly**  
This is the philosophy with  
which door manufacturers are  
supposed to achieve greater  
profitable efficiency.

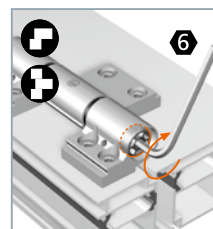
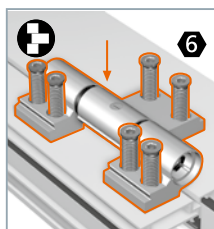
## Installation instructions



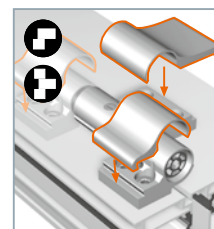
Drill 11 mm diameter  
holes.



Place hinge blade on the section and screw  
through at least two section claddings of min.  
1.6 mm each.



Screw-in lifting and  
lowering spindle.



Snap on cover strips.  
Snap caps in place.













## A safe choice



The new Hahn Türband 4 has received the three-star certificate from the Dutch testing inspectorate SKG which is recognised all over Europe. This certificate confirms testing and approval of aluminium doors and their effectiveness to prevent burglary.

Even under laboratory conditions, the Hahn Türband 4 withstood burglary attempts lasting several minutes – and thus makes sure that potential thieves have a difficult time.

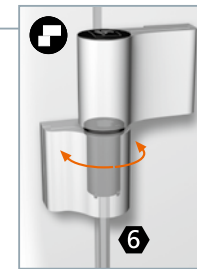


|   |  |  |  |  |  |  |  |  |
|---|---|---|---|---|---|---|---|---|
|   | Service classes   | Durability  | Weight of test door   | Fire resistance   | Security  | Corrosion resistance  | Intrusion protection  | Hinge class   |
|  | 4   | 7   | 7   | 1   | 1   | 4   | 1   | 14  |
|  | 4   | 7   | 7   | 1   | 1   | 4   | 1   | 14  |

See [www.dr-hahn.com](http://www.dr-hahn.com) for explanations of the table



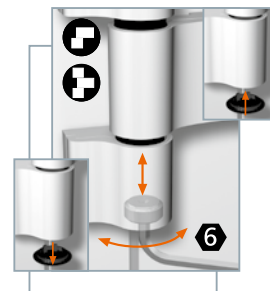
## Adjustment instructions



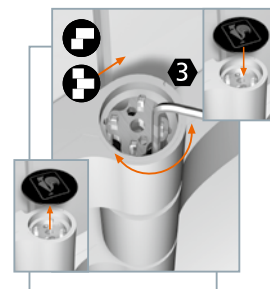
**Adjusting the sealing pressure**  
Turn the bearing bushing  $\pm 90^\circ$  until you feel it catch (sealing pressure  $\pm 0.5$  mm).



Turn the bearing bushing  $\pm 90^\circ$  until you feel it catch (sealing pressure  $\pm 0.5$  mm).  
Turn the bottom bearing bushing  $\pm 90^\circ$  using the adjustment star until you feel it catch.



**Adjusting the height**  
 $+ 3/- 2$  mm



**Horizontal adjustment**  
 $\pm 2,5$  mm

## Certified quality for high loads

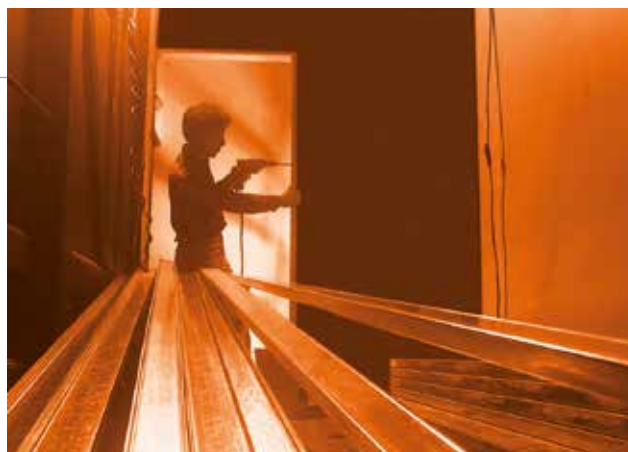
Since this new hinge is frequently installed on industrial and commercial doors or so-called mandated areas smoke control, fire safety and escape routes, CE certification is an absolute must. The Hahn Türband 4 attained the highest classification with class 14 in testing according to EN 1935 and is thus approved for doors with very significant loading. The standard version of the hinge may also be installed on fire safety doors. Depending on section design and application, the standard hinges with Hahn screw anchors are able to support doors weighing up to 220 kg.

**MADE IN GERMANY**

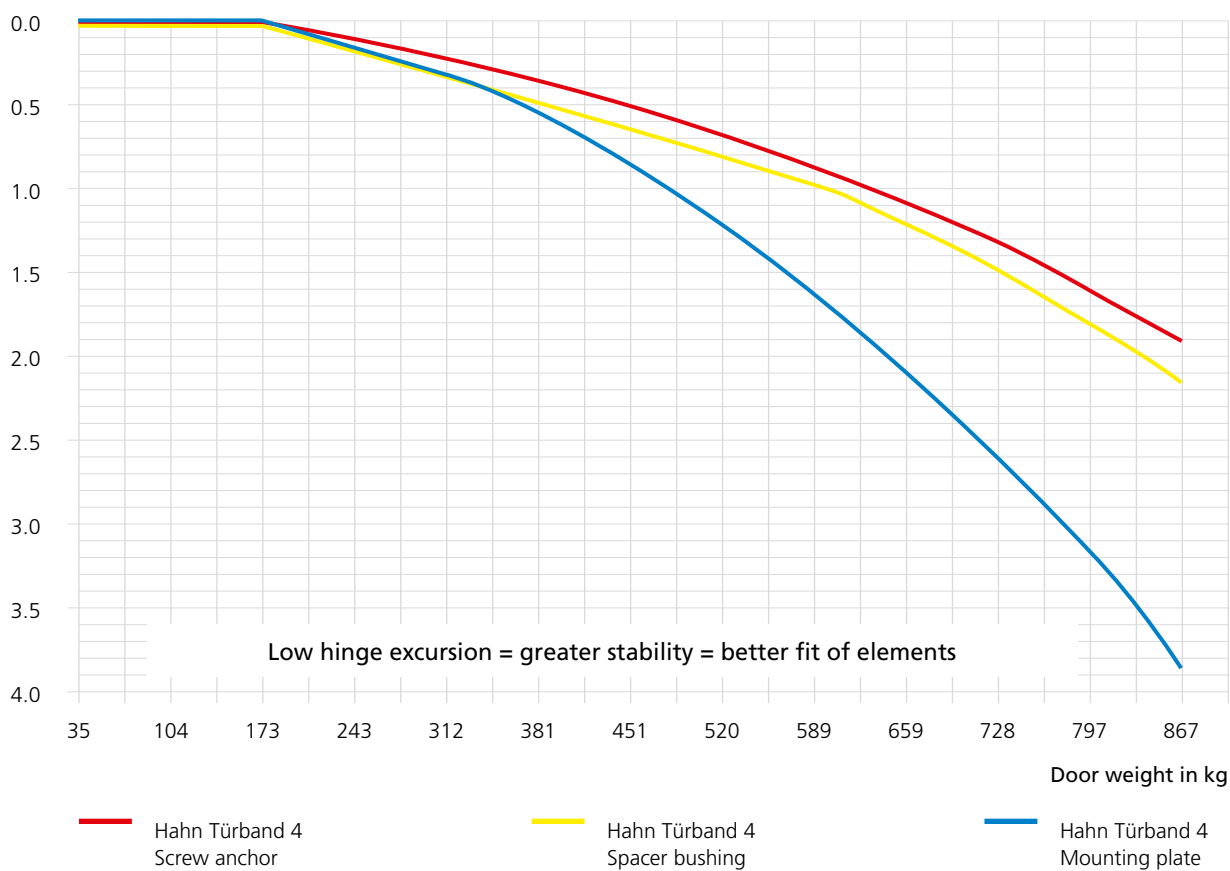


## A matter of stability

After receiving positive market experience with the Hahn screw anchor, which has become in many cases the standard for mounting hinges, direct mounting with a special screw seems like the logical trend. To this end, the threaded anchor possesses the same excellent draw-out values as the anchor screws – a wall thickness of 1.6 mm is required.

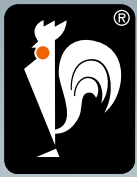


Hinge excursion in mm



Load when door is open 90° (theoretical weight of doors)





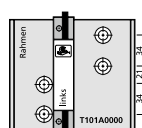
# Hahn Türband 4

For representative commercial and functional doors

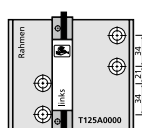
## TECHNOLOGY



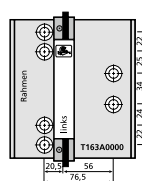
## Drilling jigs



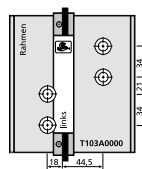
T101A0000



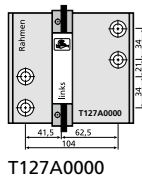
T125A0000



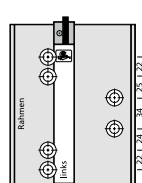
T163A0000



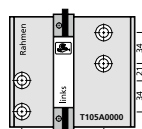
T103A0000



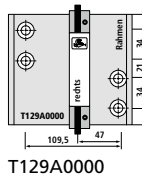
T127A0000



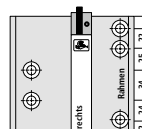
T165A0000



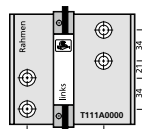
T105A0000



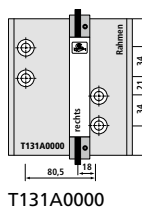
T129A0000



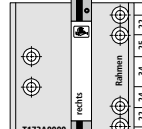
T171A0000



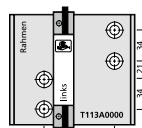
T111A0000



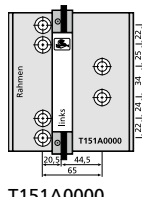
T131A0000



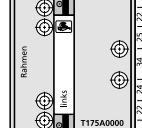
T173A0000



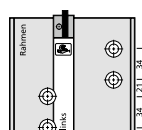
T113A0000



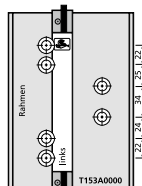
T151A0000



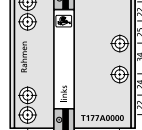
T175A0000



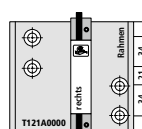
T115A0000



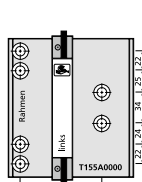
T153A0000



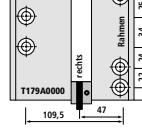
T177A0000



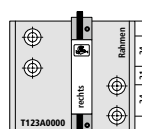
T121A0000



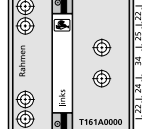
T155A0000



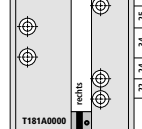
T179A0000



T123A0000



T161A0000



T181A0000

## General suggestions for hinge placement

The following design fundamentals are authoritative for hinge placement: Size and weight of door, wall thickness of section, frame design, how the door opens, type of loading, hinge mounting. This information is essential for a precise design calculation.













|                     | Object                          | Max. door size [mm] | Max. door weight [kg] | Upperdoor closer OTS | Swing door drive mechanism | Closing sequence controller |
|---------------------|---------------------------------|---------------------|-----------------------|----------------------|----------------------------|-----------------------------|
| Normal loading      | Detached House                  | 1250 x 2000         | 160                   |                      |                            |                             |
|                     | Detached House                  | 1250 x 2000         | 180                   |                      |                            |                             |
|                     | Building with multiple dwelling | 1250 x 2000         | 160                   |                      |                            |                             |
|                     | Building with multiple dwelling | 1250 x 2000         | 180                   |                      |                            |                             |
|                     | Building with multiple dwelling | 1250 x 2000         | 160                   | ■                    |                            |                             |
| Significant loading | Building with multiple dwelling | 1250 x 2000         | 180                   | ■                    |                            |                             |
|                     | Hospital, school, ...           | 1250 x 2000         | 160                   | ■                    |                            |                             |
|                     | Hospital, school, ...           | 1250 x 2000         | 180                   |                      |                            |                             |
|                     | Hospital, school, ...           | 1250 x 2000         | 160                   |                      | ■                          |                             |
|                     | Hospital, school, ...           | 1250 x 2000         | 180                   |                      | ■                          |                             |
|                     | Hospital, school, ...           | 1250 x 2000         | 160                   |                      |                            | ■                           |
|                     | Hospital, school, ...           | 1250 x 2000         | 180                   |                      |                            | ■                           |
|                     | Hospital, school, ...           | 1250 x 2000         | 180                   |                      |                            | ■                           |

These general suggestions for hinge placement were based on the frame sections of standard width (approx. 45 mm) with wall thicknesses of roughly 2 mm. We recommend that you contact our free design calculation service, should you have any doubts, since the individual door-frame systems vary significantly in terms of projected widths and wall thickness and the mounting of the hinges to the frame play a major role. To determine the necessary hinge placement, we need some details from you. Please ask for our questionnaire about hinge placement. Important: All information and calculations are only valid for original Hahn hinges since they are based on the specific design characteristics of Dr. Hahn hinges.

## Versions for installation with the Hahn screw anchor

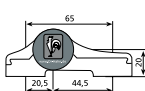
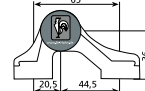
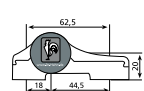
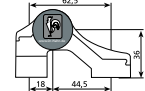
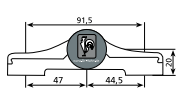
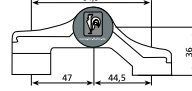
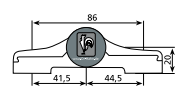
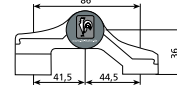
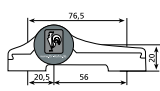
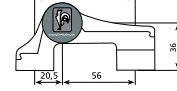
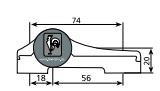
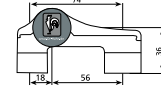
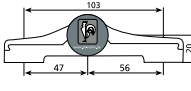
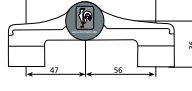
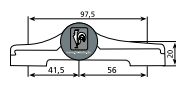
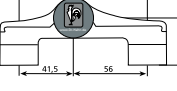
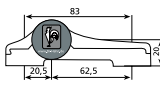
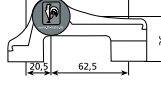
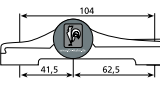
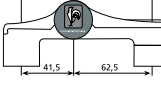
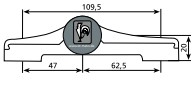
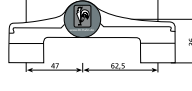
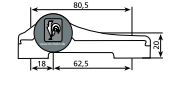
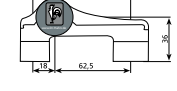
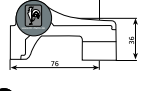
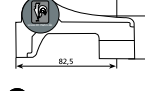
### Recommended hinge placement

### Arrangement

|  |  |
|--|--|
|    | Distance from door edge approx. 150 mm                               |
|    | Third hinge approx. 150 mm below the top hinge                       |
|    | Distance from door edge approx. 150 mm                               |
|    | Third hinge approx. 150 mm below the top hinge                       |
|    | Third hinge approx. 150 mm below the top hinge                       |
|   | Two hinges with one below the other at the top and one in the middle |
|  | Third hinge approx. 150 mm below the top hinge                       |
|  | Two hinges with one below the other at the top and one in the middle |
|  | Third hinge approx. 150 mm below the top hinge                       |
|  | Two hinges with one below the other at the top and one in the middle |
|  | Third hinge approx. 150 mm below the top hinge                       |
|  | Two hinges with one below the other at the top and one in the middle |



Bearing points made of maintenance-free plastic containing Teflon  
– do not lubricate!

|   |  |   |   |
|---|--|---|---|
|    |     |    |    |
| ⊕ A901 □ ○ 000<br>⊕ A951 □ ○ 000  | ⊕ A902 □ ○ 000<br>⊕ A952 □ ○ 000   | ⊕ A903 □ ○ 000<br>⊕ A953 □ ○ 000  | ⊕ A904 □ ○ 000<br>⊕ A954 □ ○ 000  |
|    |    |    |    |
| ⊕ A905 □ ○ 000<br>⊕ A955 □ ○ 000  | ⊕ A906 □ ○ 000<br>⊕ A956 □ ○ 000   | ⊕ A911 □ ○ 000<br>⊕ A961 □ ○ 000  | ⊕ A912 □ ○ 000<br>⊕ A962 □ ○ 000  |
|    |    |    |    |
| ⊕ A913 □ ○ 000<br>⊕ A963 □ ○ 000  | ⊕ A914 □ ○ 000<br>⊕ A964 □ ○ 000   | ⊕ A915 □ ○ 000<br>⊕ A965 □ ○ 000  | ⊕ A916 □ ○ 000<br>⊕ A966 □ ○ 000  |
|    |    |    |    |
| ⊕ A921 □ ○ 000<br>⊕ A971 □ ○ 000  | ⊕ A922 □ ○ 000<br>⊕ A972 □ ○ 000   | ⊕ A923 □ ○ 000<br>⊕ A973 □ ○ 000  | ⊕ A924 □ ○ 000<br>⊕ A974 □ ○ 000  |
|  |  |  |  |
| ⊕ A925 □ ○ 000<br>⊕ A975 □ ○ 000  | ⊕ A926 □ ○ 000<br>⊕ A976 □ ○ 000   | ⊕ A927 □ ○ 000<br>⊕ A977 □ ○ 000  | ⊕ A928 □ ○ 000<br>⊕ A978 □ ○ 000  |
|  |  |  |  |
| ⊕ A929 □ ○ 000<br>⊕ A979 □ ○ 000  | ⊕ A930 □ ○ 000<br>⊕ A980 □ ○ 000   | ⊕ A931 □ ○ 000<br>⊕ A981 □ ○ 000  | ⊕ A932 □ ○ 000<br>⊕ A982 □ ○ 000  |
|  |   |   |   |
| ⊕ Item number on request  | ⊕ Item number on request   |   |   |

### Hahn screw anchor

#### For aluminium sections

37,5 mm 48 mm 58 mm 74 mm



#### For steel sections

58 mm



#### Mounting plates available on request



### Stock key

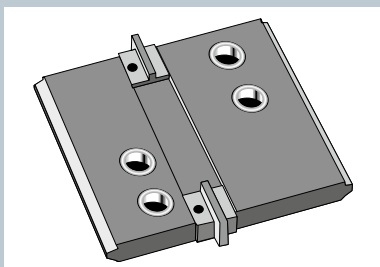
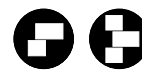
|     |                       |
|-----|-----------------------|
| ⊕ B | = EV1                 |
| ⊕ R | = Electric brown matt |
| ⊕ G | = RAL 9016            |

|     |                             |
|-----|-----------------------------|
| ⊕ K | = 37,5 mm, steel            |
| ⊕ L | = 37,5 mm, rust-proof       |
| ⊕ T | = 48 mm, steel              |
| ⊕ V | = 48 mm, rust-proof         |
| ⊕ W | = 58 mm, steel              |
| ⊕ Y | = 58 mm, rust-proof         |
| ⊕ S | = 58 mm, for steel sections |
| ⊕ M | = 74 mm, steel              |
| ⊕ N | = 74 mm, rust-proof         |

### Example:

A901 ⊕ B ⊕ T 000  
→ EV1, 48 mm, Steel

Other applications available on request

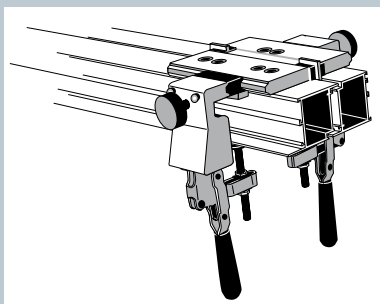
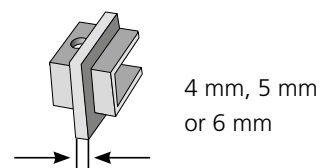


**Drilling jig** consisting of:

- 1 drill plate
- 3 pairs of spacers for shadow groove (4, 5 und 6 mm)
- 2 grooved pins Ø 5 mm for self-installation

Item numbers see page 10

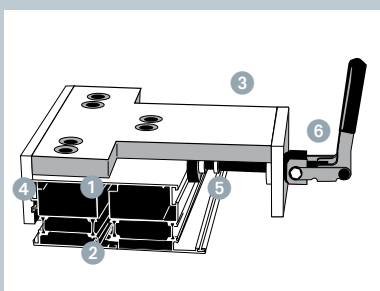
**Spacers**



**Add-on set** for setting up a rapid-clamping drilling jig consisting of:

- 2 clamping units
- 2 great spacers with 4 screws M6 x 75
- 1 small spacer with 2 screws M6 x 60
- 4 screws M6 x 40 (for installation without spacers)

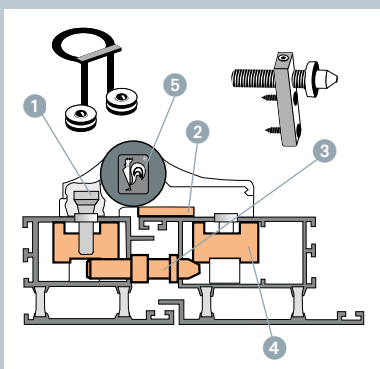
The add-on set is mounted on the existing drilling jig. The rapid-clamping drilling jig is suited for projected widths up to approx. 90 mm (frame) or approx. 110 mm (leaf).



**Rapid-clamping drilling jig**

- ① Omission of spacers on the hinge side
- ② No longer necessary to twist sections
- ③ Less clamping tools – no complicated fastening of drilling jig with screw clamps
- ④ Section-fitted mounting
- ⑤ Plastic pressure disk to prevent damage to section
- ⑥ Pretension adjustable to section tolerances

Please contact us if you would like to order a rapid-clamping drilling jig.



**Special accessories for intrusion protection**

(Special design for anti-burglary doors)

- ① **Ball set**  
Balls for securing the hexagon sockets of fastening screws for doors that open outward
- ② Plate to support the hinge blade on the section.
- ③ Collared securing pin to prevent the door from being forced open
- ④ Section-based mounting plates
- ⑤ Saw-resistant bearing pin

For item numbers see overleaf





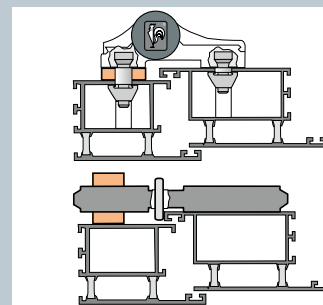
### Furring of hinge base

- for interleaved doors
- for corner post constructions

**Accessories:** Furring of hinge base, extended eccentric rings, extended screws

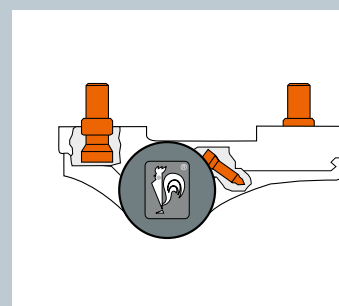
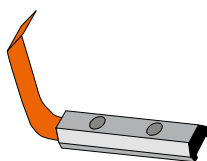
Include frame drawing when ordering.  
Factory assembly necessary.

Special drilling jig for interleaved doors

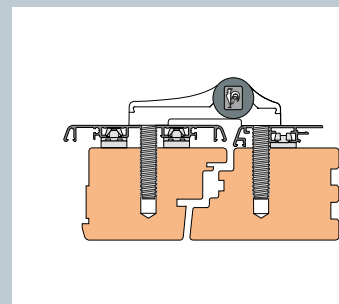


### Special rust-proof version

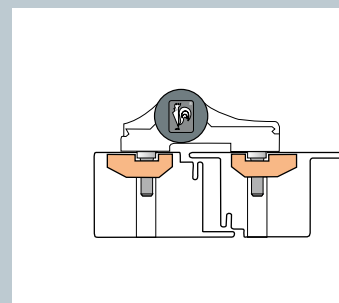
Mounting plate

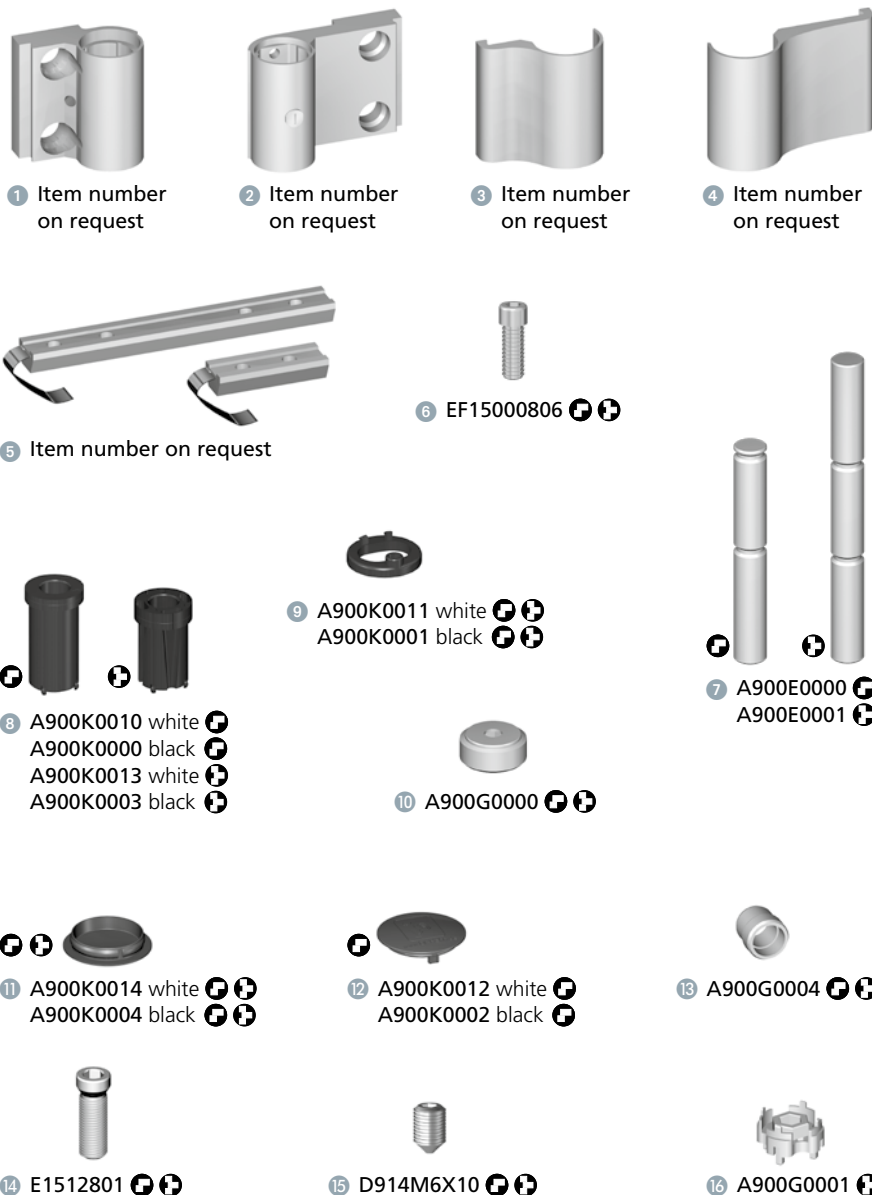
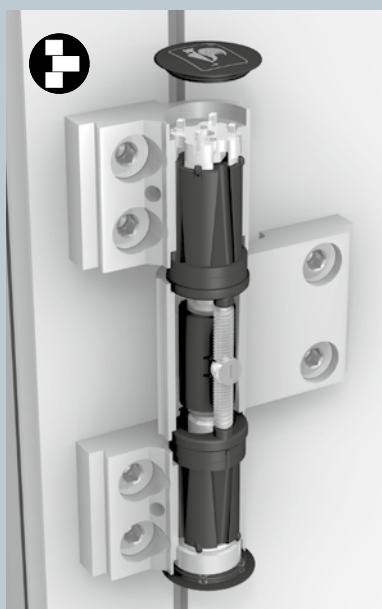
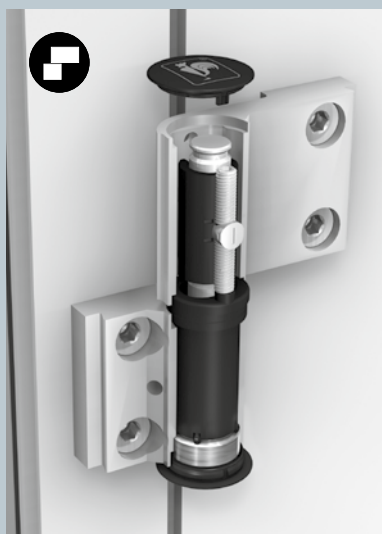


### Special version for wood/aluminium construction



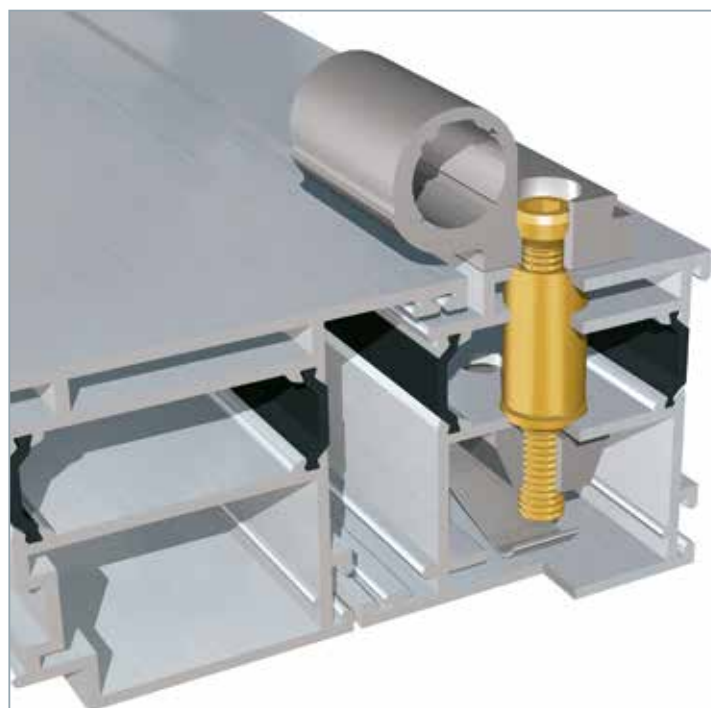
### Wide mounting plates for thin-walled steel sections





- |                                     |                              |
|-------------------------------------|------------------------------|
| 1 Frame hinge blade                 | 9 Upthrust washer            |
| 2 Door hinge blade                  | 10 Pressure spindle          |
| 3 Cover strip for frame hinge blade | 11 Cap for frame hinge blade |
| 4 Cover strip for door hinge blade  | 12 Cap for door hinge blade  |
| 5 Mounting plate                    | 13 Shell standard            |
| 6 Locking screw                     | 14 Screw M8 x 25             |
| 7 Bearing pin                       | 15 Set-screw M6 x 10         |
| 8 Bearing bushing                   | 16 Adjustment star           |

## Adjustable distance bushes



A650A0020

A650A0021



A650A0022

A650A0023



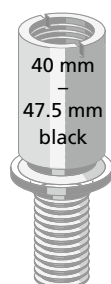
A650A0024

A650A0025



A650A0026

A650A0027



A650A0028

A650A0029

Rust-proof design

The Hahn Türband 4 must be mounted with plates and possibly adjustable spacers, if need be, on sections that have a wall thickness of less than 1.6 mm. There are special technical versions for these particular applications.



Use Hahn counterbore to drill out the 11 mm-diameter holes to a 15 mm diameter. Do not drill through main chamber.



Screw support stud screw with mounting plate (special screwdriver). Recommended torque 12 to max. 17 Nm. The collar should rest on the main chamber.



Screw spacer bush on to support stud screw, until it is flush with the surface of the section.

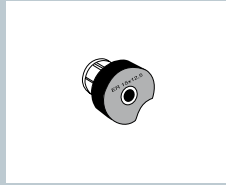


Secure hinges with screws in the internal threading of the support stud screw. Recommended torque 20 to 30 Nm.

# Hahn Türband 4

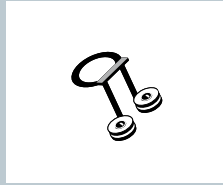
## Item numbers Accessories

Slip-type jig bush



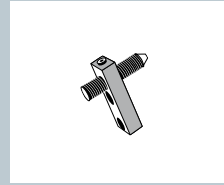
A650A0056

Ball set  
PU=40 balls, 2 each  
in special holder



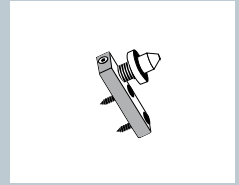
A850A0011

Securing pin



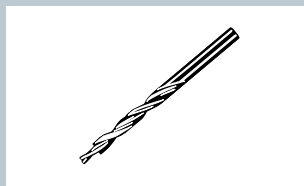
A650A0017

Collared securing pin



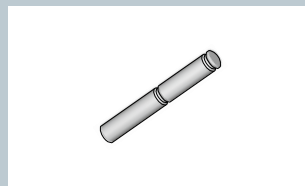
A850A0000

Step drill



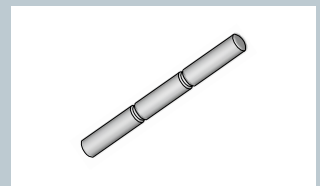
A650A0035

Saw-resistant bearing  
pin (for 2-piece hinges)  
PU=24 pieces



A950A0177

Saw-resistant bearing  
pin (for 3-piece hinges)  
PU=24 pieces



A950A0178