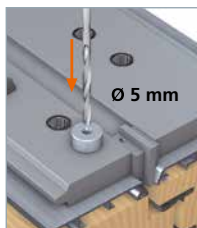


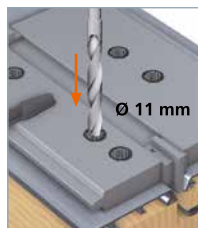
# Hahn Türband 4

## Assembly / positioning notification

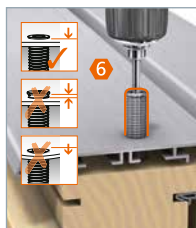
### Fitting of the hinge



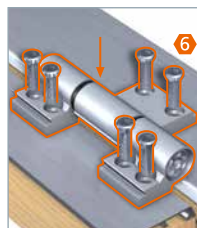
Optional:  
pilot-drilling with a  
Hahn Drill bushing  
No. A650A0056.



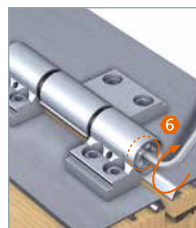
Drill 11 mm diameter  
holes.



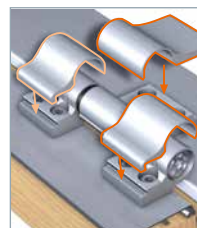
Screw in anchor until  
flush with surface.



Secure hinges with  
screws in the internal  
threading of the  
screw anchor  
(20 – 25 Nm).



Screw-in lifting and  
lowering spindle.



Snap-on cover strips.  
Snap caps into place.

### Sealing pressure adjustment



Turn the bearing  
bushing  $\pm 90^\circ$  until  
you feel it catch  
(sealing pressure  
 $\pm 0.5$  mm).

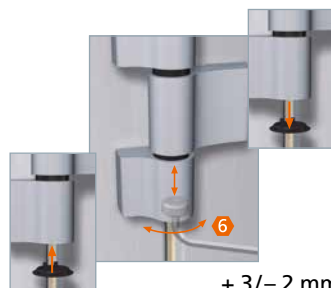
Turn the bottom  
bearing bushing  
 $\pm 90^\circ$  using the  
adjustment star until  
you feel it catch.

### Horizontal adjustment



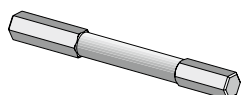
$\pm 2.5$  mm

### Height adjustment



+3/-2 mm

## Accessories



Security set (for three-piece hinges)  
PU = 1 snap-off screw, 4 steel balls  
No. A750A0027



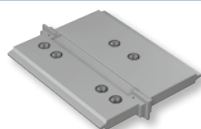
Slip-type jig bush  
No. A650A0056 Ø 5 mm/Ø 11 mm



Step drill  
No. A650A0035 Ø 6 mm/Ø 11 mm



Drill with  
No. K450A0001 Ø 5 mm



Drilling jig upon request



Saw-resistant bearing pin (for 3-piece hinges) PU = 24 pieces  
No. A950A0178