



Hahn Türband 4



For wooden doors and wood / aluminium door

TÜRBAND 4



Quick

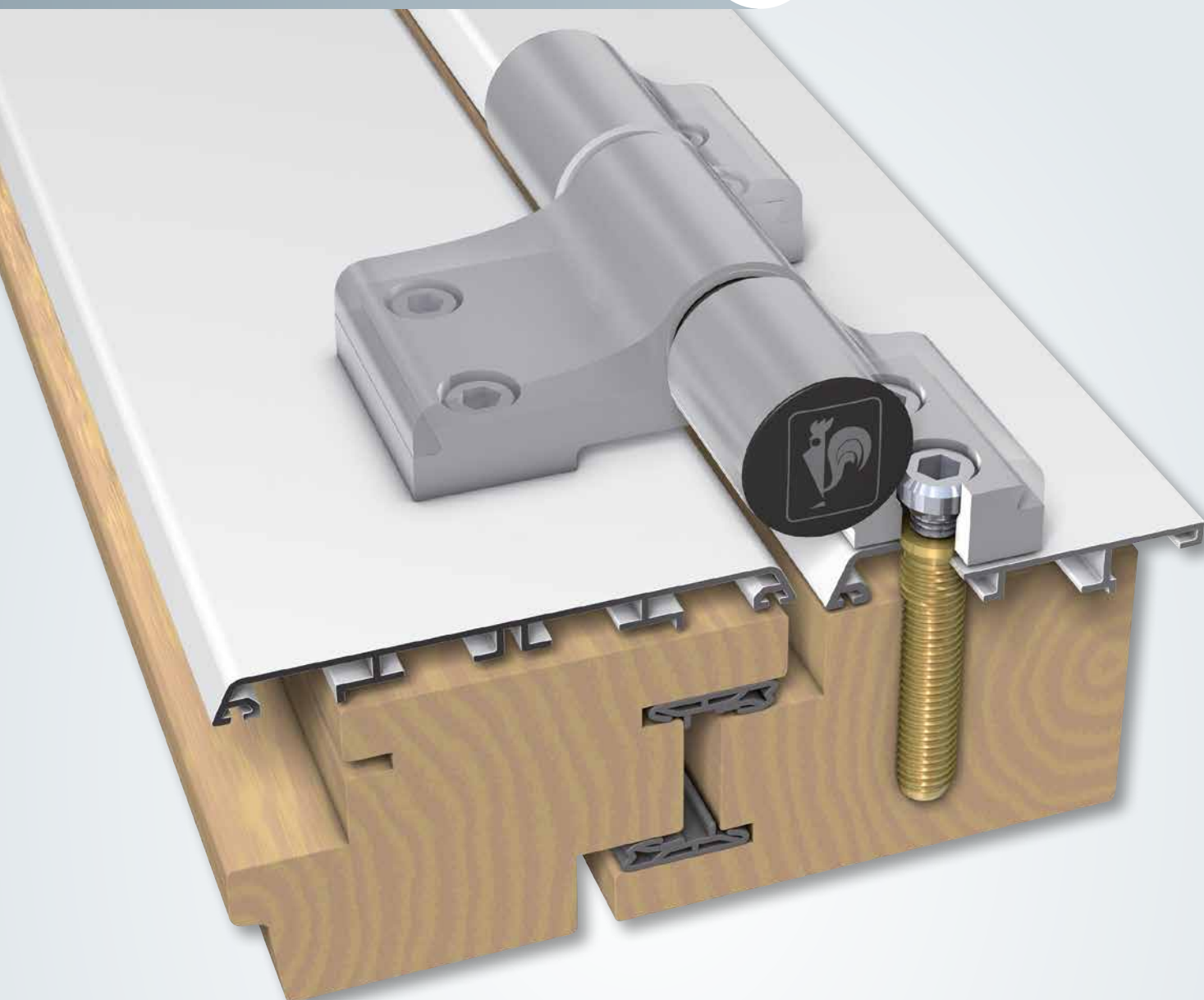
Strong

Secure

CE



FIXATION IN ONLY 3 STEPS



The new method of mounting with the Hahn anchor screw needs only 3 steps for fitting: **drill, screw and fasten**

- Very quick handling
- No need to remove the aluminium frame
- No need to use a packer
- Applicable for aluminium frames with heights up to 23 mm
- Adjustable in 6 directions – without lifting up- and out of the doorleaf
- Additional placement of extra hinges without too much trouble – even with already fitted frames
- Hinges to fit with the colour of the aluminium frame – choice from a pallet of RAL colours
- For a range of aluminium frame servicable/applicable

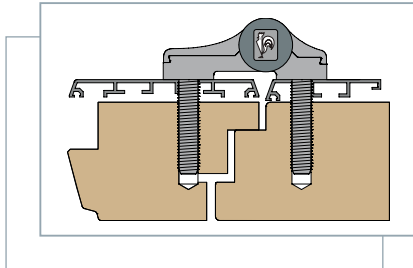


Hahn Türband 4

For wooden doors and wood/aluminium door

Areas of application

House doors made from wood and wooden/aluminium combinations

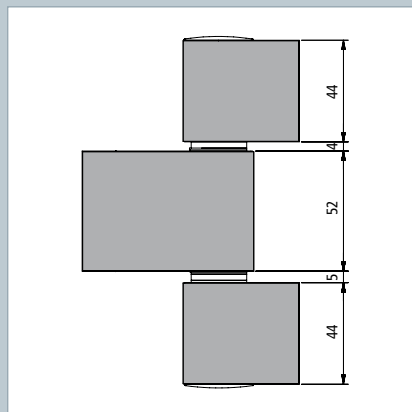


Simple adjustment

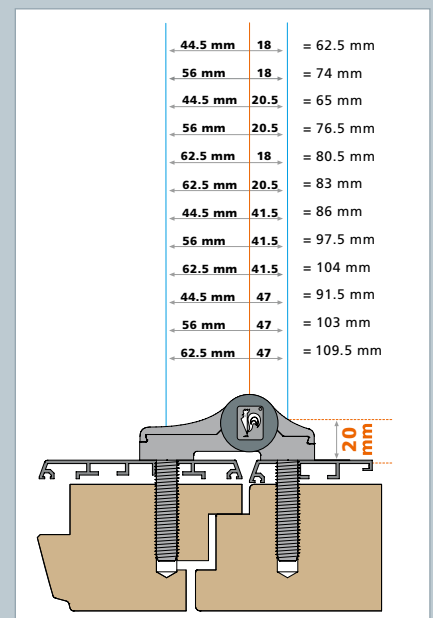
- **Horizontal adjustment**
infinitely adjustable ± 2.5 mm
for a quick handling
- **Adjusting the height**
variable $+3/-2$ mm – without
lifting or removing the door
- **Adjustment of sealing pressure**
 ± 0.5 mm with door leaf installed

Further advantages

- Dimensionally stable and colour-fast plastic parts for long-lasting attractive look
- Solid bearing pins rustproof for high hinge stability
- Adjustment tool integrated – thus always available on-site
- Solid hinge blades in elegant design – for a light appearance on the door
- Continuous bearing pin rust-proof – for great hinge stability
- Bearing point maintenance-free – no lubrication necessary
- Covers that snap into place – with integrated lock screw
- Innovative mounting with Hahn screw anchor – for quicker processing
- Door adjustment by one person only



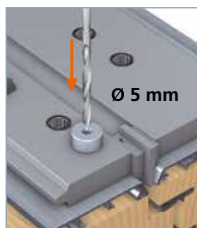
Article number upon request with specification of the profile drawing.



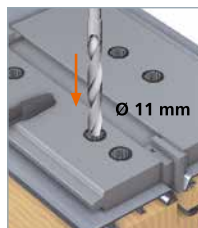
Hahn Türband 4

Assembly / positioning notification

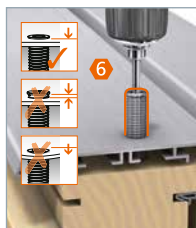
Fitting of the hinge



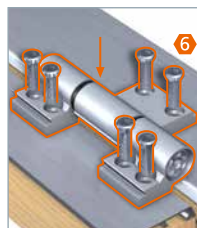
Optional:
pilot-drilling with a
Hahn Drill bushing
No. A650A0056.



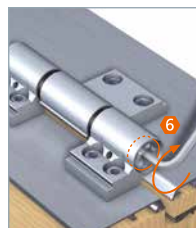
Drill 11 mm diameter
holes.



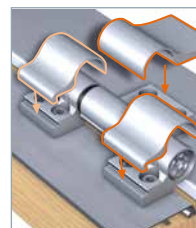
Screw in anchor until
flush with surface.



Secure hinges with
screws in the internal
threading of the
screw anchor
(20 – 25 Nm).



Screw-in lifting and
lowering spindle.



Snap-on cover strips.
Snap caps into place.

Sealing pressure adjustment



Turn the bearing
bushing $\pm 90^\circ$ until
you feel it catch
(sealing pressure
 ± 0.5 mm).

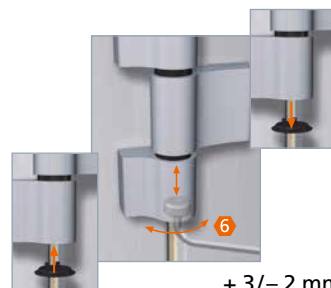
Turn the bottom
bearing bushing
 $\pm 90^\circ$ using the
adjustment star until
you feel it catch.

Horizontal adjustment



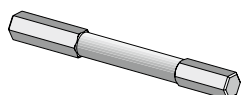
± 2.5 mm

Height adjustment



+3/-2 mm

Accessories



Security set (for three-piece hinges)
PU = 1 snap-off screw, 4 steel balls
No. A750A0027



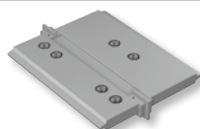
Slip-type jig bush
No. A650A0056 Ø 5 mm/Ø 11 mm



Step drill
No. A650A0035 Ø 6 mm/Ø 11 mm



Drill with
No. K450A0001 Ø 5 mm



Drilling jig upon request



Saw-resistant bearing pin (for 3-piece hinges) PU = 24 pieces
No. A950A0178