



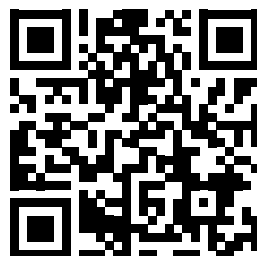
# Hahn AT-G

- D** Universalband für leichte Aluminiumtüren
- F** Paumelle universelle pour portes aluminium légères
- GB** *Universal hinge for lightweight aluminum doors*



Einbauanleitung · Notice de montage · *Installation instructions*

CE

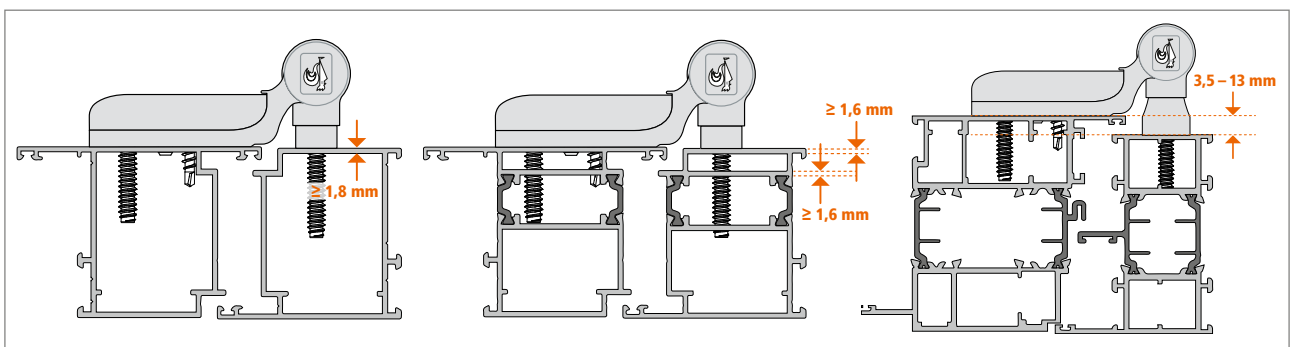
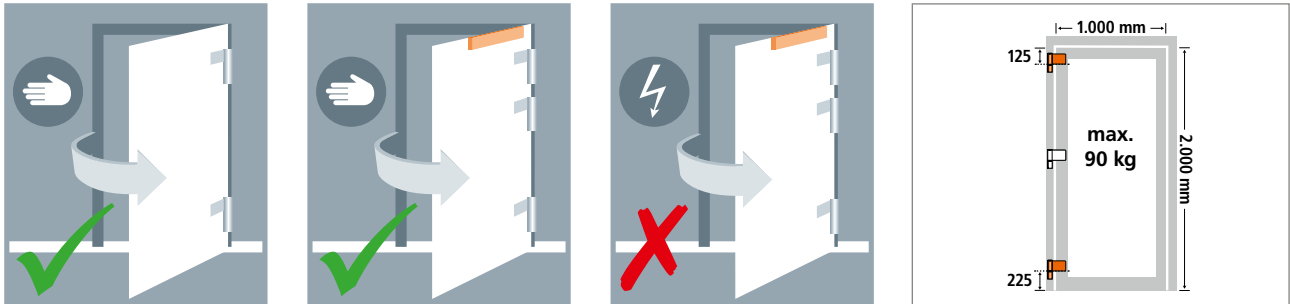


**Einbauanleitung**  
**Notice de montage**  
**Installation instructions**



Nur für den  
 professionellen Gebrauch  
 Usage professionnel  
 uniquement  
 Only for professional use

**Vorbereitung · Préparation · Preparation**

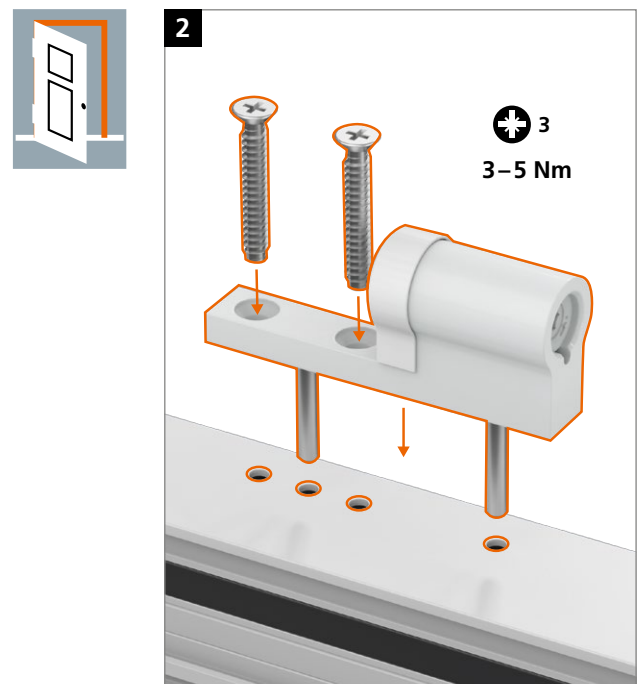


Lagerbuchse aus wartungsfreiem  
 teflonhaltigen Kunststoff  
 – keinesfalls schmieren!

Douille en matière plastique à teneur  
 en téflon ne requérant aucun entre-  
 tien – ne graisser en aucun cas !

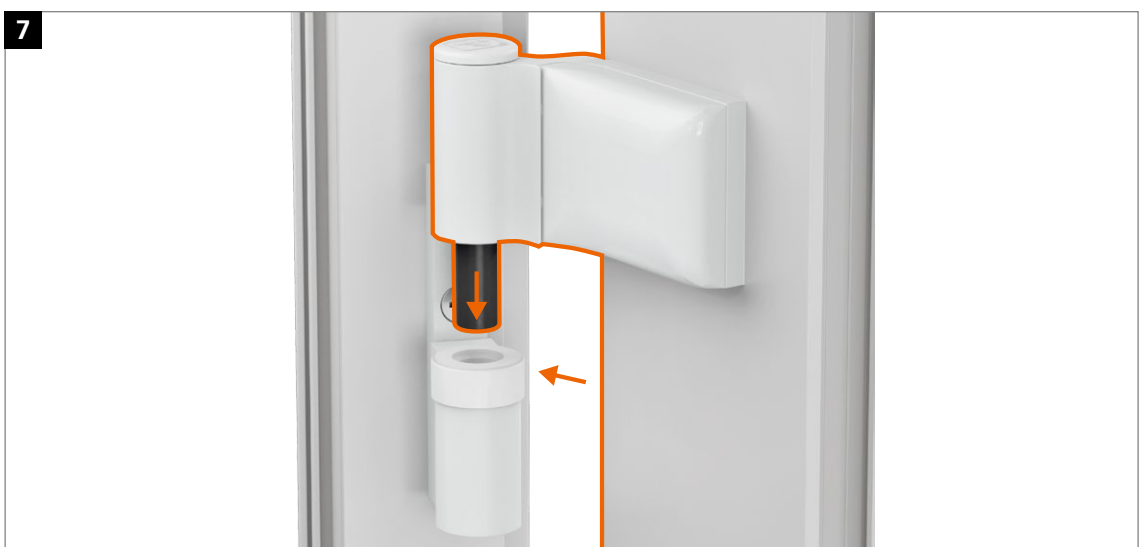
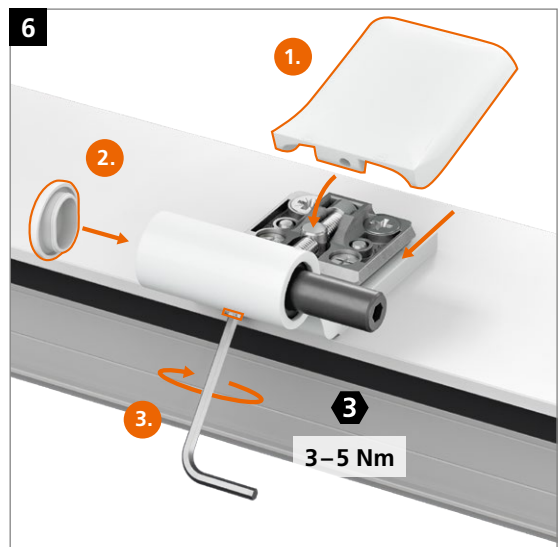
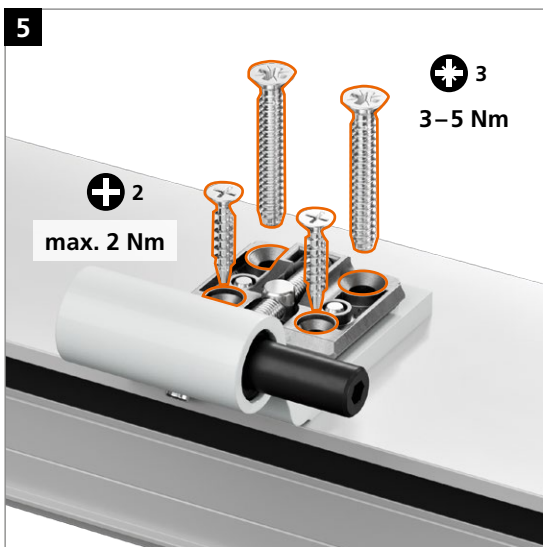
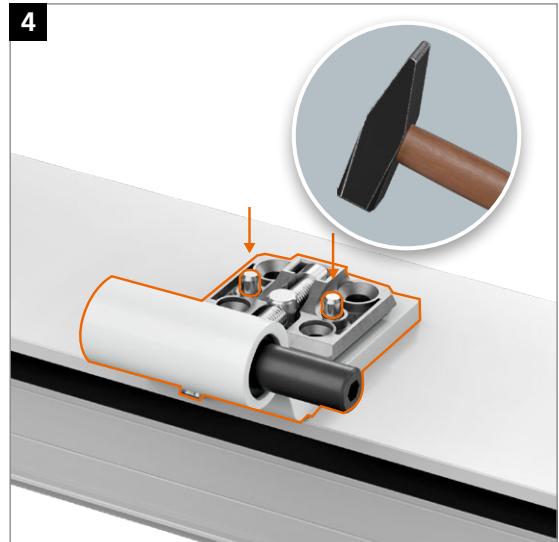
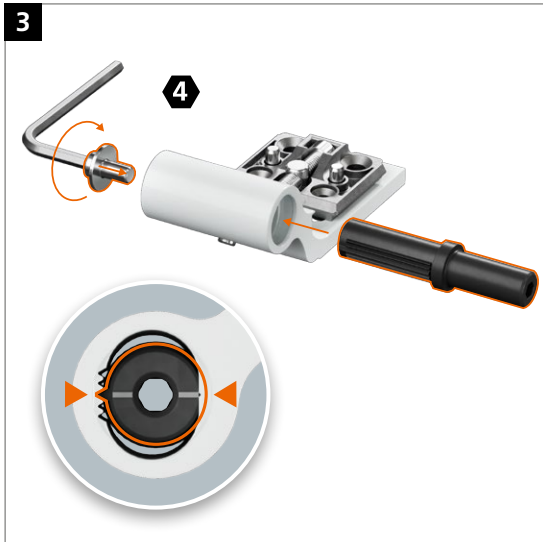
Bearing bushes made of mainte-  
 nance-free PVC containing Teflon  
 – do not lubricate!

**Montage des Türbands · Montage de la paumelle · Installing the hinge**



**Einbauanleitung**  
**Notice de montage**  
**Installation instructions**

**Montage des Türbands · Montage de la paumelle · Installing the hinge**



**Einstellanleitung**  
**Notice de réglage**  
**Adjustment instructions**

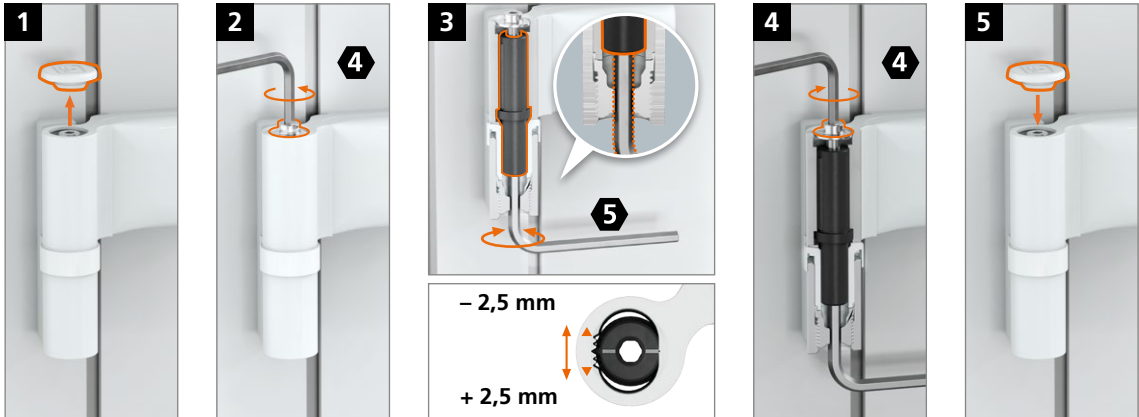


Nur für den  
 professionellen Gebrauch  
 Usage professionnel  
 uniquement  
 Only for professional use

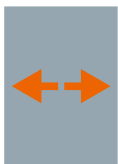
**Dichtungsdruck einstellen · Réglage en continu de la compression du joint · Adjusting the sealing pressure**



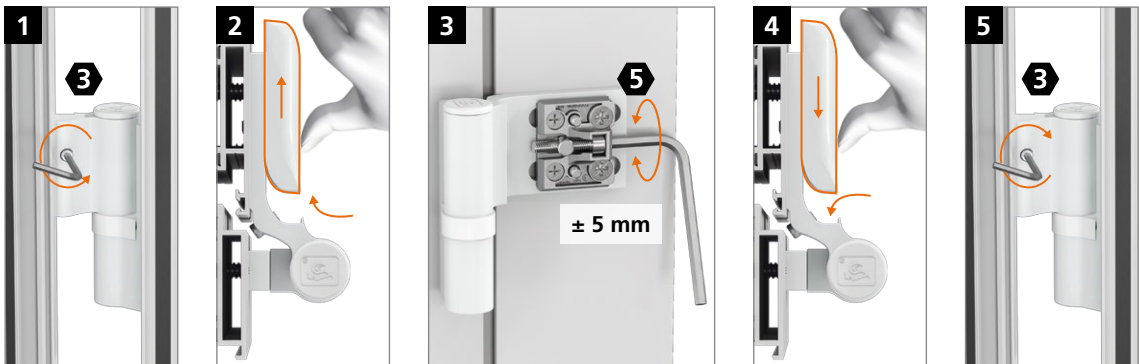
± 2,5 mm



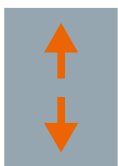
**Horizontalverstellung · Réglage horizontal · Horizontal adjustment**



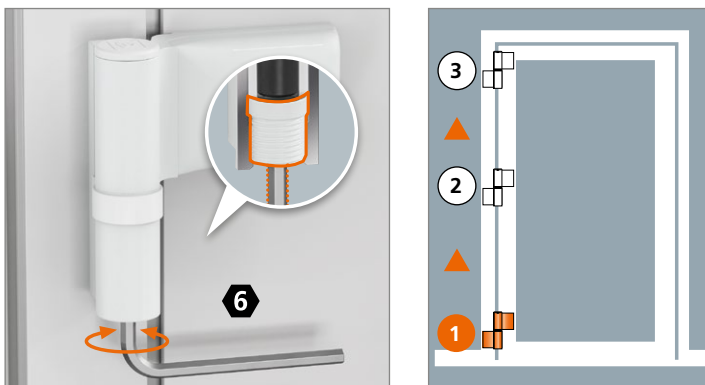
± 5 mm



**Höhenverstellung · Réglage en hauteur · Height adjustment**



+ 3 mm /  
 - 2 mm



**Achtung:**  
 Unteres Band soll tragen, obere  
 Bänder nur nachstellen.

**Attention :**  
 La paumelle inférieure doit porter;  
 effectuez le réglage sur cette  
 paumelle et réajustez seulement les  
 paumelles supérieures, si nécessaire.

**Caution:**  
 The bottom hinge should bear the  
 weight, only readjust the top hinges.

